

## 2020-2021 State Assessments Review for 2022-2023 Budget Considerations

District: <u>369 Burrton</u>	Bldg #	Grades Served:
School: <u>District</u>		

**(A) Identify the barriers that must be overcome for each student to achieve grade level proficiency on assessments.**

Attendance, curriculum in Science and Social Studies

**(B) Identify the budget actions that should be taken to address and remove those barriers.**

Continue to use ESSER and other monies for curriculum purchases and professional development for teachers. Use funds to do an attendance is important media push.

**(C) Identify the amount of time the board estimates it will take for each student to achieve grade level proficiency on the state assessments if the budget actions would be implemented.**

# 2020-2021 State Assessments Review for 2022-2023 Budget Considerations

District: <u>369 Burrton</u>	Bldg #	Grades Served:
School: <u>District</u>		

Continual learning. Should see a difference with curriculum in 2 years after adoption.

## Resources

### KSDE's Data Central

<a href="#">Performance Accountability Report</a>	Demographics, Postsecondary Success Preparation & Effectiveness, STAR Recognition status, Graduation/Success/Effective Rate, Attendance & Dropout Rate, Chronic Absenteeism, ESSA Expenditures per Pupil, Academic Success by Demographics and ACT Performance. <i>*Data is available at district level and building level.</i>
<a href="#">Longitudinal Achievement Report</a>	State Assessments Longitudinal Performance Level. <i>*Data is available at district level and building level.</i>
<a href="#">Public Report Card</a>	Information for Social-Emotional, Kindergarten Readiness, Individual Plans of Study, Graduation, Civic Engagement, Postsecondary Success, IDEA State Performance Plan, Comparative Performance & Fiscal System (Budget data), Teacher Licensure, Dropout, Attendance, Performance Level Reports, ACT Scores, and National Assessment of Educational Progress. <i>*Data is available at district level and most, but not all, is also available at building level.</i>
<a href="#">Kansas K-12 Reports</a>	Attendance Rate, Building Dates of Construction, Building Schedule, Inclement Weather & Inservice Dates, Concurrent High School Enrollment, Lunch Headcount (Free & Reduced), Headcount Enrollment, & Personnel by Type (Certified & Non-Certified) <i>*Data is available at district level and most, but not all, is also available at building level.</i>

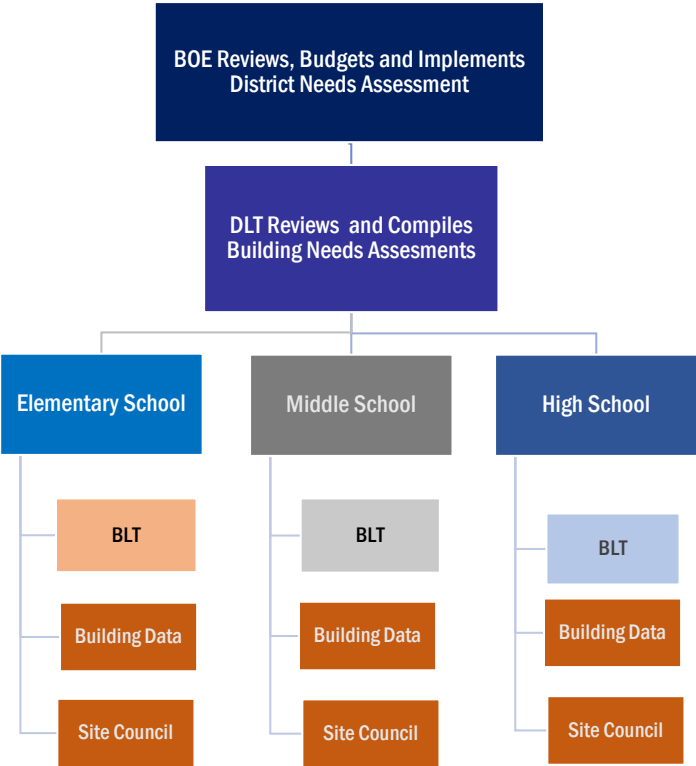
### **Data Central (School Finance Reports)**

<a href="#">Financial Accountability Report</a>	FTE Enrollment, Expenditures for Fund 06 & 08, 16, 62 & 63, All Other Funds and Total of All Funds, State Aid for all weighting categories and Virtual, Total Expenditures for Fund 11, 13, 14, 15, 30, 34, and 51, Fund 08 Transfers, Article 6, Section 6 Constitutional Challenge Expenditures, General Obligation Bonded Indebtedness, and Demographic Headcount. <i>*Data is available at district level only.</i>
<a href="#">Budget Documents</a>	Budget At-a-Glance, Profile, Form 150, Summary and Budget Codes. <i>*Data is available at district level only.</i>
<a href="#">Comparative Performance &amp; Fiscal System (CPFS)</a>	Budget data by fund. <i>*Data is available at district level only.</i>
<a href="#">CPA Reports</a>	Payments made to each organization by County. <i>*Data is available at district level only.</i>
<a href="#">School Finance Reports Warehouse</a>	Bond Proceed Projects, State Foundation (General State) Aid/Supplemental General State Aid, Transportation Data, Transportation Costs (Report), Cash Balances, Current Operating Expenditures, Expenditures per Pupil, Total Expenditures, Meal Pricing Data, Headcount Enrollment (Public & Private, Accredited), Personnel Reports (Certified & Non-Certified), Pupil-Teacher Ratio, Kindergarten Formats (Building & District), Bonded Indebtedness, Salary Reports (Principals, Superintendents & Teachers), Mill Rates, Assessed Valuation <i>*Data is available at district level only unless specified.</i>

### KSDE's Web Applications

AMOSS - Academic Measures of Student Success	
Dropout/Graduation Summary Report	
EDCS (Licensed Personnel Report)	
Kansas Education Systems Accreditation (KESA)	
Kansas Integrated Accountability System (KIAS)	
LCP System	
Pathways	
Principals Building Report (PBR)	
SPEDPro	
Star Recognition	
Superintendent's Organization Report (SO66)	
<b>Local</b>	
MAPP	
NAEP	
Other Local Assessments	
MTSS data	
KansaStar (if applicable)	
ASQ (Kindergarten Readiness Survey)	
Early Childhood Programs	
Social/Emotional Measures	
Civic Engagement Programs	
Curriculum	
Bullying Prevention	
Career and Technical Education (CTE)	
Child Nutrition and Wellness Programs	
Evidence Based At-Risk Practices/Programs	
Graduation Requirements	
Individual Plan of Study Program	
Professional Development Plans	
Parent Engagement	
Community Engagement	
Title I Programs	
Other:	
Other:	
Other:	
Other:	

# District Needs Assessment Budgeting Process Chart



Budget Fiscal Year 2023  
 Needs Assessment Year 2022  
 State Assessment Review Year 2021

Fill in light yellow cells to populate dates and names throughout document.  
 Building info listed to the right is for reference.

USD #	USD Name	USD Home County	9/20/2020
USD #	USD Name	USD Home County	Headcount
USD #	USD Name	USD Home County	Grand Total
101	Erie-Galesburg	Neosho	203
101	Erie-Galesburg	Neosho	98
101	Erie-Galesburg	Neosho	24
102	Cimarron-Ensign	Gray	358
102	Cimarron-Ensign	Gray	303
103	Cheyvin	Cheyenne	66
103	Cheyvin	Cheyenne	87
105	Rawlins County	Rawlins	205
105	Rawlins County	Rawlins	159
106	Western Plains	Ness	60
106	Western Plains	Ness	26
106	Western Plains	Ness	39
107	Rock Hills	Jewell	8
107	Rock Hills	Jewell	208
107	Rock Hills	Jewell	199
108	Washington Co. Schools	Washington	0
108	Washington Co. Schools	Washington	154
108	Washington Co. Schools	Washington	207
109	Republic County	Republic	0
109	Republic County	Republic	257
109	Republic County	Republic	268
110	Thunder Ridge Schools	Phillips	42
110	Thunder Ridge Schools	Phillips	71
110	Thunder Ridge Schools	Phillips	68
111	Doniphan West Schools	Doniphan	146
111	Doniphan West Schools	Doniphan	210
112	Central Plains	Ellsworth	1
112	Central Plains	Ellsworth	63
112	Central Plains	Ellsworth	90
112	Central Plains	Ellsworth	221
112	Central Plains	Ellsworth	118
112	Central Plains	Ellsworth	852
113	Prairie Hills	Nemaha	43
113	Prairie Hills	Nemaha	402
113	Prairie Hills	Nemaha	231
113	Prairie Hills	Nemaha	161
113	Prairie Hills	Nemaha	92
113	Prairie Hills	Nemaha	43
113	Prairie Hills	Nemaha	115
114	Riverside	Doniphan	130
114	Riverside	Doniphan	148
114	Riverside	Doniphan	203
114	Riverside	Doniphan	152
114	Riverside	Doniphan	4
115	Nemaha Central	Nemaha	533
115	Nemaha Central	Nemaha	219
200	Greeley County Schools	Greeley	127
200	Greeley County Schools	Greeley	124
202	Turner-Kansas City	Wyandotte	17
202	Turner-Kansas City	Wyandotte	263
202	Turner-Kansas City	Wyandotte	6
202	Turner-Kansas City	Wyandotte	483
202	Turner-Kansas City	Wyandotte	513
202	Turner-Kansas City	Wyandotte	576
202	Turner-Kansas City	Wyandotte	582
202	Turner-Kansas City	Wyandotte	1154
202	Turner-Kansas City	Wyandotte	13
203	Piper-Kansas City	Wyandotte	651
203	Piper-Kansas City	Wyandotte	611
203	Piper-Kansas City	Wyandotte	68
203	Piper-Kansas City	Wyandotte	727
204	Bonner Springs	Wyandotte	74
204	Bonner Springs	Wyandotte	802
204	Bonner Springs	Wyandotte	341
204	Bonner Springs	Wyandotte	585
204	Bonner Springs	Wyandotte	371
205	Bluestem	Butler	267
205	Bluestem	Butler	258
206	Remington-Whitewater	Butler	1
206	Remington-Whitewater	Butler	145
206	Remington-Whitewater	Butler	193
206	Remington-Whitewater	Butler	32
207	Ft Leavenworth	Leavenworth	420
207	Ft Leavenworth	Leavenworth	435
207	Ft Leavenworth	Leavenworth	493
207	Ft Leavenworth	Leavenworth	79
208	Wakeeney	Trego	303
208	Wakeeney	Trego	110
209	Moscow Public Schools	Stevens	68
209	Moscow Public Schools	Stevens	74
210	Huotont Public Schools	Stevens	539
210	Huotont Public Schools	Stevens	166
210	Huotont Public Schools	Stevens	312
210	Huotont Public Schools	Stevens	22
211	Norton Community Schools	Norton	1
211	Norton Community Schools	Norton	371
211	Norton Community Schools	Norton	93
211	Norton Community Schools	Norton	197
212	Northern Valley	Norton	75
212	Northern Valley	Norton	45
212	Northern Valley	Norton	41
214	Ulysses	Grant	362
214	Ulysses	Grant	296
214	Ulysses	Grant	432
214	Ulysses	Grant	402
214	Ulysses	Grant	21
215	Lakin	Kearny	272
215	Lakin	Kearny	189
215	Lakin	Kearny	183
216	Deerfield	Kearny	144
216	Deerfield	Kearny	49
216	Deerfield	Kearny	59
217	Rolla	Morton	54
217	Rolla	Morton	48
218	Elkhart	Morton	176
218	Elkhart	Morton	119
218	Elkhart	Morton	1423
218	Elkhart	Morton	40
219	Minneola	Clark	1
219	Minneola	Clark	164
219	Minneola	Clark	75
220	Ashland	Clark	97
220	Ashland	Clark	50
220	Ashland	Clark	61
223	Barnes	Washington	206
223	Barnes	Washington	63
223	Barnes	Washington	147
223	Barnes	Washington	53
224	Clifton-Clyde	Washington	0
224	Clifton-Clyde	Washington	111
224	Clifton-Clyde	Washington	87
225	Fowler	Meade	61
225	Fowler	Meade	47
226	Meade	Meade	266
226	Meade	Meade	117
227	Hodgeman County Schools	Hodgeman	167
227	Hodgeman County Schools	Hodgeman	126
229	Blue Valley	Johnson	553
229	Blue Valley	Johnson	589
229	Blue Valley	Johnson	595
229	Blue Valley	Johnson	415
229	Blue Valley	Johnson	752
229	Blue Valley	Johnson	580
229	Blue Valley	Johnson	566
229	Blue Valley	Johnson	1531
229	Blue Valley	Johnson	1489
229	Blue Valley	Johnson	359
229	Blue Valley	Johnson	644
229	Blue Valley	Johnson	568
229	Blue Valley	Johnson	244
229	Blue Valley	Johnson	560
229	Blue Valley	Johnson	388
229	Blue Valley	Johnson	477
229	Blue Valley	Johnson	630
229	Blue Valley	Johnson	351
229	Blue Valley	Johnson	511
229	Blue Valley	Johnson	469

229	Blue Valley	Johnson	0783	Cottonwood Point Elementary	Elementary	K-5	344
229	Blue Valley	Johnson	0784	Harmony Middle	Middle School	6-8	534
229	Blue Valley	Johnson	0785	Harmony Elementary	Elementary	K-5	503
229	Blue Valley	Johnson	0820	Blue Valley Southwest High School	High School	9-12	1072
229	Blue Valley	Johnson	0823	Aubry Bend Middle School	Middle School	6-8	779
229	Blue Valley	Johnson	0937	Wolf Springs Elementary School	Elementary	K-5,PK (w/IEP),PK	563
229	Blue Valley	Johnson	7773	Prairie Star Elementary	Elementary	K-5	375
229	Blue Valley	Johnson	7774	Blue Valley Northwest High	High School	9-12	1573
229	Blue Valley	Johnson	7775	Heartland Elementary	Elementary	K-5	384
229	Blue Valley	Johnson	7776	Prairie Star Middle	Middle School	6-8	449
229	Blue Valley	Johnson	7777	Blue Valley West High	High School	9-12,NG	1655
229	Blue Valley	Johnson	7786	Blue River Elementary	Elementary	K-5	484
229	Blue Valley	Johnson	7787	Pleasant Ridge Middle	Middle School	6-8	599
229	Blue Valley	Johnson	7788	Sunset Ridge Elementary	Elementary	K-5,PK (w/IEP),PK	408
229	Blue Valley	Johnson	7790	Sunrise Point Elementary	Elementary	K-5	458
230	Spring Hill	Johnson	0786	Spring Hill Dist Johnson Co	Central Office	N/A - Central Office	12
230	Spring Hill	Johnson	0787	Spring Hill Elementary School	Elementary	K-5,PK (w/IEP),PK,PKAR (3 YOL),PKAR (4 YOL)	591
230	Spring Hill	Johnson	0790	Spring Hill High School	High School	9-12,NG	961
230	Spring Hill	Johnson	0792	Spring Hill Middle School	Middle School	6-8	465
230	Spring Hill	Johnson	0793	Prairie Creek Elementary	Elementary	K-5,PK (w/IEP)	410
230	Spring Hill	Johnson	0794	Insight School of KS at Hilltop Ed Center	High School	7-12,NG	995
230	Spring Hill	Johnson	0929	Wolf Creek Elementary School	Elementary	K-5,PK (w/IEP)	308
230	Spring Hill	Johnson	0931	Kansas Virtual Academy (KSAVA)	Elementary	K-6	718
230	Spring Hill	Johnson	0951	Timber Saze Elementary School	Elementary	K-5,PK (w/IEP)	323
230	Spring Hill	Johnson	0954	Woodland Spring Middle School	Middle School	6-8	372
230	Spring Hill	Johnson	0957	Dixton Creek Elementary School	Elementary	K-5,PK (w/IEP)	228
231	Gardner Edgerton	Johnson	0802	Gardner Dist Johnson Co	Central Office	N/A - Central Office	11
231	Gardner Edgerton	Johnson	0804	Gardner Elem	Elementary	K-4,PK (w/IEP),PK	316
231	Gardner Edgerton	Johnson	0808	Gardner Edgerton High	High School	9-12,NG	1737
231	Gardner Edgerton	Johnson	0812	Edgerton Elem	Elementary	K-5,PK (w/IEP),PK	162
231	Gardner Edgerton	Johnson	0814	Sunflower Elementary	Elementary	K-4,PK (w/IEP),PK	348
231	Gardner Edgerton	Johnson	0815	Moonlight Elementary School	Elementary	K-4,PK (w/IEP),PK,PKAR (4 YOL)	320
231	Gardner Edgerton	Johnson	0816	Madison Elementary	Elementary	K-4,PK (w/IEP),PK	516
231	Gardner Edgerton	Johnson	0817	Pioneer Ridge Middle School	Middle School	6-8	547
231	Gardner Edgerton	Johnson	0818	Nike Elementary	Elementary	K-4,PK (w/IEP),PK	367
231	Gardner Edgerton	Johnson	0819	Wheatridge Middle School	Middle School	5-8	540
231	Gardner Edgerton	Johnson	0927	Grand Star Elementary	Elementary	K-4,PK (w/IEP),PK	364
231	Gardner Edgerton	Johnson	0930	Trail Ridge Middle School	Middle School	6-8	697
232	De Soto	Johnson	0824	De Soto Dist Johnson Co	Central Office	N/A - Central Office	178
232	De Soto	Johnson	0825	Clear Creek Elem	Elementary	K-5,PK (w/IEP),PK,PKAR (3 YOL),PKAR (4 YOL)	558
232	De Soto	Johnson	0829	Horizon Elementary	Elementary	K-5,PK (w/IEP),PK,PKAR (3 YOL),PKAR (4 YOL)	355
232	De Soto	Johnson	0832	De Soto High School	High School	9-12	979
232	De Soto	Johnson	0833	Mill Valley High School	High School	9-12	1318
232	De Soto	Johnson	0835	Monticello Trails Middle School	Middle School	6-8	732
232	De Soto	Johnson	0836	Lexington Trails Middle School	Middle School	6-8	257
232	De Soto	Johnson	0837	Starside Elem	Elementary	K-5,PK (w/IEP),PK,PKAR (3 YOL),PKAR (4 YOL)	460
232	De Soto	Johnson	0841	Prairie Ridge Elementary School	Elementary	K-5,PK (w/IEP),PK,PKAR (3 YOL),PKAR (4 YOL)	482
232	De Soto	Johnson	0842	Mize Elementary School	Elementary	K-5,PK (w/IEP),PK,PKAR (3 YOL),PKAR (4 YOL)	455
232	De Soto	Johnson	0843	Riverview Elementary	Elementary	K-5,PK (w/IEP),PK,PKAR (3 YOL),PKAR (4 YOL)	475
232	De Soto	Johnson	0844	Mill Creek Middle School	Middle School	6-8	653
232	De Soto	Johnson	0912	Belmont Elementary School	Elementary	K-5,PK (w/IEP),PK,PKAR (3 YOL),PKAR (4 YOL)	385
232	De Soto	Johnson	0997	Virtual Education Program	High School	9-12	17
233	Olathe	Johnson	0845	Olathe Northwest High School	High School	9-12,NG	1908
233	Olathe	Johnson	0846	Regency Place Elementary	Elementary	K-5,PK (w/IEP),PK,PKAR (3 YOL),PKAR (4 YOL)	411
233	Olathe	Johnson	0847	Frontier Trail Middle School	Middle School	6-8	686
233	Olathe	Johnson	0849	Brougham Elem	Elementary	K-5,PK (w/IEP),PK,PKAR (3 YOL),PKAR (4 YOL)	320
233	Olathe	Johnson	0850	Central Elem	Elementary	K-5,PK (w/IEP),PK,PKAR (3 YOL),PKAR (4 YOL)	226
233	Olathe	Johnson	0851	Indian Creek Elem	Elementary	K-5,PK (w/IEP),PK,PKAR (3 YOL),PKAR (4 YOL)	382
233	Olathe	Johnson	0852	Fairview Elem	Elementary	K-5,PK (w/IEP),PK,PKAR (3 YOL),PKAR (4 YOL)	241
233	Olathe	Johnson	0853	Biarwood Elem	Elementary	K-5,PK (w/IEP),PK,PKAR (3 YOL),PKAR (4 YOL)	313
233	Olathe	Johnson	0854	Ridgeview Elem	Elementary	K-5,PK (w/IEP),PK,PKAR (3 YOL),PKAR (4 YOL)	268
233	Olathe	Johnson	0855	Walnut Grove Elem	Elementary	K-5,PK (w/IEP),PK,PKAR (3 YOL),PKAR (4 YOL)	391
233	Olathe	Johnson	0856	Prairie Center Elem	Elementary	K-5,PK (w/IEP),PK,PKAR (3 YOL),PKAR (4 YOL)	387
233	Olathe	Johnson	0857	Pioneer Trail Middle School	Middle School	6-8	605
233	Olathe	Johnson	0858	Washington Elem	Elementary	K-5,PK (w/IEP),PK,PKAR (3 YOL),PKAR (4 YOL)	380
233	Olathe	Johnson	0859	Countyrivside Elementary	Elementary	K-5,PK (w/IEP),PK,PKAR (3 YOL),PKAR (4 YOL)	305
233	Olathe	Johnson	0860	Westview Elem	Elementary	K-5,PK (w/IEP),PK,PKAR (3 YOL),PKAR (4 YOL)	172
233	Olathe	Johnson	0861	Santa Fe Trail Middle School	Middle School	6-8	651
233	Olathe	Johnson	0862	Oregon Trail Middle School	Middle School	6-8	657
233	Olathe	Johnson	0863	Indian Trail Middle School	Middle School	6-8	608
233	Olathe	Johnson	0864	Olathe North Sr High	High School	9-12,NG	2093
233	Olathe	Johnson	0865	Olathe South Sr High	High School	9-12,NG	1944
233	Olathe	Johnson	0868	Meadow Lane Elem	Elementary	K-5,PK (w/IEP),PK,PKAR (3 YOL),PKAR (4 YOL)	403
233	Olathe	Johnson	0870	Rolling Ridge Elem	Elementary	K-5,PK (w/IEP),PK,PKAR (3 YOL),PKAR (4 YOL)	397
233	Olathe	Johnson	0871	Northview Elem	Elementary	K-5,PK (w/IEP),PK,PKAR (3 YOL),PKAR (4 YOL)	249
233	Olathe	Johnson	0872	Havenwood Elem	Elementary	K-5,PK (w/IEP),PK,PKAR (3 YOL),PKAR (4 YOL)	265
233	Olathe	Johnson	0874	Scarborough Elem	Elementary	K-5,PK (w/IEP),PK,PKAR (3 YOL),PKAR (4 YOL)	317
233	Olathe	Johnson	0875	Heritage Elementary	Elementary	K-5,PK (w/IEP),PK,PKAR (3 YOL),PKAR (4 YOL)	341
233	Olathe	Johnson	0876	Black Bob Elem	Elementary	K-5,PK (w/IEP),PK,PKAR (3 YOL),PKAR (4 YOL)	332
233	Olathe	Johnson	0877	Tomahawk Elem	Elementary	K-5,PK (w/IEP),PK,PKAR (3 YOL),PKAR (4 YOL)	344
233	Olathe	Johnson	0885	Olathe East Sr High	High School	9-12,NG	1885
233	Olathe	Johnson	0913	Mission Trail Middle School	Middle School	6-8	694
233	Olathe	Johnson	0934	Millbrook Elementary	Elementary	K-5,PK (w/IEP),PK,PKAR (3 YOL),PKAR (4 YOL)	407
233	Olathe	Johnson	0939	Olathe West High School	High School	9-12,NG	1622
233	Olathe	Johnson	0950	Summit Trail Middle School	Middle School	6-8	595
233	Olathe	Johnson	0953	Canyon Creek Elementary	Elementary	K-5,PK (w/IEP),PK,PKAR (3 YOL),PKAR (4 YOL)	388
233	Olathe	Johnson	0959	Olathe Virtual School	Other	K-12	315
233	Olathe	Johnson	2781	Green Springs Elem	Elementary	K-5,PK (w/IEP),PK,PKAR (3 YOL),PKAR (4 YOL)	256
233	Olathe	Johnson	2782	Mahaffie Elem	Elementary	K-5,PK (w/IEP),PK,PKAR (3 YOL),PKAR (4 YOL)	434
233	Olathe	Johnson	2783	Pleasant Ridge Elem	Elementary	K-5,PK (w/IEP),PK,PKAR (3 YOL),PKAR (4 YOL)	295
233	Olathe	Johnson	2784	Heatherstone Elem	Elementary	K-5,PK (w/IEP),PK,PKAR (3 YOL),PKAR (4 YOL)	452
233	Olathe	Johnson	2785	Bentwood Elem	Elementary	K-5,PK (w/IEP),PK,PKAR (3 YOL),PKAR (4 YOL)	349
233	Olathe	Johnson	2786	California Trail Middle School	Middle School	6-8	646
233	Olathe	Johnson	2787	Cedar Creek Elem	Elementary	K-5,PK (w/IEP),PK,PKAR (3 YOL),PKAR (4 YOL)	426
233	Olathe	Johnson	2788	Madison Place Elementary	Elementary	K-5,PK (w/IEP),PK,PKAR (3 YOL),PKAR (4 YOL)	400
233	Olathe	Johnson	2790	Woodland Elem	Elementary	K-5,PK (w/IEP),PK,PKAR (3 YOL),PKAR (4 YOL)	333
233	Olathe	Johnson	9300	Sunnyside Elementary School	Elementary	K-5,PK (w/IEP),PK,PKAR (3 YOL),PKAR (4 YOL)	349
233	Olathe	Johnson	9301	Chisholm Trail Middle School	Middle School	6-8	637
233	Olathe	Johnson	9302	Arbor Creek Elementary	Elementary	K-5,PK (w/IEP),PK,PKAR (3 YOL),PKAR (4 YOL)	420
233	Olathe	Johnson	9304	Manchester Park Elementary	Elementary	K-5,PK (w/IEP),PK,PKAR (3 YOL),PKAR (4 YOL)	601
233	Olathe	Johnson	9305	Clearwater Creek Elementary	Elementary	K-5,PK (w/IEP),PK,PKAR (3 YOL),PKAR (4 YOL)	511
233	Olathe	Johnson	9306	Prairie Trail Middle School	Middle School	6-8	724
233	Olathe	Johnson	9307	Riverswood Elementary	Elementary	K-5,PK (w/IEP),PK,PKAR (3 YOL),PKAR (4 YOL)	451
233	Olathe	Johnson	9311	Forest View Elem	Elementary	K-5,PK (w/IEP),PK,PKAR (3 YOL),PKAR (4 YOL)	480
234	Fort Scott	Bourbon	0888	Fort Scott Dist Bourbon Co	Central Office	N/A - Central Office	4
234	Fort Scott	Bourbon	0899	Eugene Ware Elem	Elementary	3-5	358
234	Fort Scott	Bourbon	0900	Winifred Scott Elem	Elementary	K-5,PK (w/IEP),PK,PKAR (3 YOL),PKAR (4 YOL)	469
234	Fort Scott	Bourbon	0902	Fort Scott Middle School	Middle School	6-8	444
234	Fort Scott	Bourbon	0904	Fort Scott Sr High	High School	9-12	574
234	Fort Scott	Bourbon	0989	USD 234 Virtual School	Other	K-12	15
235	Uniontown	Bourbon	0964	Uniontown High School	High School	9-12	205
235	Uniontown	Bourbon	0966	West Bourbon Elementary	Elementary	K-6,PK (w/IEP),PK,PKAR (4 YOL)	272
237	Smith Center	Smith	1010	Smith Center Elem	Elementary	K-6,PK (w/IEP),PK,PKAR (3 YOL),PKAR (4 YOL)	272
237	Smith Center	Smith	1012	Smith Center Jr Sr High	High School	7-12	196
239	North Ottawa County	Ottawa	1060	Minneapolis Elementary	Elementary	K-6,PK (w/IEP)	339
239	North Ottawa County	Ottawa	1064	Minneapolis Jr-Sr High School	High School	7-12	301
240	Twin Valley	Ottawa	1076	Bennington Elem	Elementary	K-6,PK (w/IEP),PK,PKAR (3 YOL),PKAR (4 YOL)	232
240	Twin Valley	Ottawa	1080	Bennington Junior High/High School	High School	7-12,NG	207
240	Twin Valley	Ottawa	1088	Tescott Elem	Elementary	K-6,PK (w/IEP),PK,PKAR (3 YOL),PKAR (4 YOL)	92
240	Twin Valley	Ottawa	1090	Tescott Junior High/High School	High School	7-12,NG	66
241	Wallace County Schools	Wallace	1104	Sharon Springs Elem	Elementary	K-8,PK (w/IEP),PK	126
241	Wallace County Schools	Wallace	1106	Wallace County High	High School	9-12	58
242	Weskan	Wallace	1120	Weskan Elem	Elementary	K-6,PK (w/IEP)	73
242	Weskan	Wallace	1122	Weskan High	High School	7-12	31
243	Lebo-Waverly	Coffey	1132	Waverly Dist Coffey Co	Central Office	N/A - Central Office	2
243	Lebo-Waverly	Coffey	1134	Lebo Elem	Elementary	K-5,PK (w/IEP),PK,PKAR (3 YOL),PKAR (4 YOL)	145
243	Lebo-Waverly	Coffey	1136	Lebo High	High School	6-12	114
243	Lebo-Waverly	Coffey	1138	Waverly Elem	Elementary	K-5,PK (w/IEP),PK,PKAR (3 YOL),PKAR (4 YOL)	133
243	Lebo-Waverly	Coffey	1140	Waverly High	High School	6-12	94
244	Burlington	Coffey	1150	Burlington Dist Coffey Co	Central Office	N/A - Central Office	2
244	Burlington	Coffey	1154	Burlington High	High School	9-12,NG	266
244	Burlington	Coffey	1163	Burlington Elementary School	Elementary	K-4,PK (w/IEP),PK,PKAR (3 YOL),PKAR (4 YOL)	305
244	Burlington	Coffey	1165	Burlington Middle School 5 - 8	Middle School	5-8	255
245	LeRoy-Gridley	Coffey	1176	Southern Coffey County High School	High School	9-12	50
245	LeRoy-Gridley	Coffey	1178	Southern Coffey County Elementary	Elementary	K-5,PK (w/IEP),PK,PKAR (3 YOL),PKAR (4 YOL)	88
245	LeRoy-Gridley	Coffey	1182	Southern Coffey County Middle School	Junior High School	6-8,PK (w/IEP),PK,PKAR (3 YOL),PKAR (4 YOL)	38
246	Northeast	Crawford	1194	Northeast Elem	Elementary	K-8,PK (w/IEP),PK,PKAR (3 YOL),PKAR (4 YOL)	337
246	Northeast	Crawford	1197	Northeast Virtual School	High School	9-12,NG	8
246	Northeast	Crawford	1198	North East High	High School	9-12,NG	137
247	Cherokee	Crawford	1218	Cherokee Dist Crawford Co	Central Office	N/A - Central Office	8
247	Cherokee	Crawford	1220	Southeast Middle School	Middle School	5-8	134
247	Cherokee	Crawford	1220	Southeast High	High School	9-12	151
247	Cherokee	Crawford	1232	Southeast Elementary School	Elementary	K-4,PK (w/IEP),PK,DC,PKAR (4 YOL)	168
248	Girard	Crawford	1244	Girard Dist Crawford Co	Central Office	N/A - Central Office	5
248	Girard	Crawford	1255	R V Haderloh Elem	Elementary	K-6,PK (w/IEP),PK,PKAR (4 YOL)	477
248	Girard	Crawford	1260	Girard Middle	Middle School	6-8	214
248	Girard	Crawford	1262	Girard High	High School	9-12	328
249	Frontenac Public Schools	Crawford	1287	Frank Layden Elem	Elementary	K-5,PK (w/IEP),PK,DC,PKAR (4 YOL)	459
249	Frontenac Public Schools	Crawford	1291	Frontenac Jr High	Junior High School	6-8	218
249	Frontenac Public Schools	Crawford	1293	Frontenac Sr. High School	High School	9-12,NG	284
250	Pittsburg	Crawford	1302	Geo E Nettles Elem	Elementary	K-5	274
250	Pittsburg	Crawford	1304	Lakeside Elem	Elementary	K-5	446
250	Pittsburg	Crawford	1307	Meadowdale Elementary	Elementary	K-5	381
250	Pittsburg	Crawford	1310	Westside Elem	Elementary	K-5,PK (w/IEP),PK,PKAR (4 YOL)	517
250	Pittsburg	Crawford	1314	Pittsburg Middle School	Middle School	6-8	743

250	Pittsburg	Crawford	1316 Pittsburg High	High School	9-12.NG	995
251	North Lyon County	Lyon	1350 NLC Elementary School	Elementary	K-5.PK (w/IEP)	207
251	North Lyon County	Lyon	2355 Northern Heights	High School	6-12.NG	111
252	Southern Lyon County	Lyon	1382 Hartford Jr./Sr. High School	High School	6-12.NG	110
252	Southern Lyon County	Lyon	1388 Neosho Rapids Elementary	Elementary	K-5.PK (w/IEP),PK,DC,PKAR (4 YO)	131
252	Southern Lyon County	Lyon	1392 Olive Elementary	Elementary	K-5.PK (w/IEP),PK,DC,PKAR (4 YO)	180
252	Southern Lyon County	Lyon	1394 Olive Jr./Sr. High School	High School	9-12.NG	139
253	Emporia	Lyon	1404 Emporia Dist Lyon Co	Central Office	N/A - Central Office	5
253	Emporia	Lyon	1414 Village Elem	Elementary	K-5.PK (w/IEP),PK,PKAR (3 YO),PKAR (4 YO)	372
253	Emporia	Lyon	1416 Walnut Elem	Elementary	K-5.PK (w/IEP),PK,PKAR (3 YO),PKAR (4 YO)	278
253	Emporia	Lyon	1418 W A White Elem	Elementary	K-5.PK (w/IEP),PK,PKAR (3 YO),PKAR (4 YO)	214
253	Emporia	Lyon	1422 Emporia Middle School	Middle School	5-9	938
253	Emporia	Lyon	1424 Emporia High	High School	7-12.NG	1461
253	Emporia	Lyon	1428 Logan Ave Elem	Elementary	K-5.PK (w/IEP),PK,PKAR (3 YO),PKAR (4 YO)	231
253	Emporia	Lyon	1429 Riverside Elementary	Elementary	K-5.PK (w/IEP),PK,PKAR (3 YO),PKAR (4 YO)	402
253	Emporia	Lyon	1430 Timmerman Elementary	Elementary	K-5.PK (w/IEP),PK,PKAR (3 YO),PKAR (4 YO)	354
254	Barber County North	Barber	1472 Medicine Lodge Grade School	Elementary	K-6.PK (w/IEP),PK,PKAR (3 YO),PKAR (4 YO)	276
254	Barber County North	Barber	1475 Medicine Lodge Jr/Sr High School	High School	7-12.NG	219
255	South Barber	Barber	1503 South Barber Pre-K	Elementary	K-6.PK (w/IEP),PK,DC,PKAR (3 YO),PKAR (4 YO)	134
255	South Barber	Barber	1504 South Barber 7-12	High School	7-12	87
256	Marmaton Valley	Allen	1536 Marmaton Valley Virtual School	High School	9-12	4
256	Marmaton Valley	Allen	1538 Marmaton Valley Elem	Elementary	K-5.PK (w/IEP),PK,PKAR (4 YO)	116
256	Marmaton Valley	Allen	1538 Marmaton Valley High	High School	6-12	134
257	Iola	Allen	1548 Iola Dist Allen Co	Central Office	N/A - Central Office	1
257	Iola	Allen	1556 Jefferson Elem	Elementary	1-2	1
257	Iola	Allen	1558 Lincoln Elem	Elementary	1-3	154
257	Iola	Allen	1560 McKinley Elem	Elementary	K.PK (w/IEP),PK,PKAR (3 YO),PKAR (4 YO)	241
257	Iola	Allen	1561 Iola High School Virtual	High School	9-12	4
257	Iola	Allen	1562 Iola Middle School	Middle School	5-8	297
257	Iola	Allen	1564 Iola Sr High	High School	9-12.NG	336
258	Humboldt	Allen	1592 Humboldt High School	High School	9-12.NG	188
258	Humboldt	Allen	1596 Humboldt Elementary School	Elementary	K-5.PK (w/IEP),PK,PKAR (4 YO)	322
258	Humboldt	Allen	1598 Humboldt Virtual Education	High School	6-12.NG	301
258	Humboldt	Allen	1600 Humboldt Middle School	Middle School	5-8	153
259	Wichita	Sedgewick	1612 Wichita Dist Sedgewick Co	Central Office	N/A - Central Office	640
259	Wichita	Sedgewick	1613 Education Imagine Academy	Other	K-12.NG	614
259	Wichita	Sedgewick	1614 Adams Elem	Elementary	K-5.PK (w/IEP),PK,PKAR (3 YO),PKAR (4 YO)	389
259	Wichita	Sedgewick	1617 Marshall Middle School	Middle School	5-8	495
259	Wichita	Sedgewick	1618 Allen Elem	Elementary	K-5.PK (w/IEP),PK,PKAR (3 YO),PKAR (4 YO)	473
259	Wichita	Sedgewick	1622 Benton Elem	Elementary	K-5.PK (w/IEP),PK,PKAR (3 YO),PKAR (4 YO)	297
259	Wichita	Sedgewick	1623 Beech Elem	Elementary	K-5.PK (w/IEP),PK,PKAR (3 YO),PKAR (4 YO)	486
259	Wichita	Sedgewick	1624 Black Traditional Magnet Elem	Elementary	K-5.PK (w/IEP),PK,PKAR (3 YO),PKAR (4 YO)	334
259	Wichita	Sedgewick	1625 Gordon Parks Academy	Elementary	K-5.PK (w/IEP),PK,PKAR (3 YO),PKAR (4 YO)	415
259	Wichita	Sedgewick	1627 Mead Middle School	Middle School	6-8	555
259	Wichita	Sedgewick	1628 Jackson Elementary	Elementary	K-5.PK (w/IEP),PK,PKAR (3 YO),PKAR (4 YO)	353
259	Wichita	Sedgewick	1634 Buckner Performing Arts Magnet Elem	Elementary	K-5.PK (w/IEP),PK,PKAR (3 YO),PKAR (4 YO)	317
259	Wichita	Sedgewick	1636 Caldwell Elem	Elementary	K-5.PK (w/IEP),PK,PKAR (3 YO),PKAR (4 YO)	422
259	Wichita	Sedgewick	1640 Cessna Elem	Elementary	K-5.PK (w/IEP),PK,PKAR (3 YO),PKAR (4 YO)	373
259	Wichita	Sedgewick	1644 Chisholm Trail Elem	Elementary	K-5.PK (w/IEP),PK,PKAR (3 YO),PKAR (4 YO)	412
259	Wichita	Sedgewick	1646 Clark Elem	Elementary	K-5.PK (w/IEP),PK,PKAR (3 YO),PKAR (4 YO)	293
259	Wichita	Sedgewick	1648 Cleaveland Traditional Magnet Elementary	Elementary	K-5.PK (w/IEP),PK,PKAR (3 YO),PKAR (4 YO)	230
259	Wichita	Sedgewick	1649 Wichita Learning Center	High School	12.NG	89
259	Wichita	Sedgewick	1655 Cloud Elem	Elementary	K-5.PK (w/IEP),PK,PKAR (3 YO),PKAR (4 YO)	524
259	Wichita	Sedgewick	1652 College Hill Elem	Elementary	K-5.PK (w/IEP),PK,PKAR (3 YO),PKAR (4 YO)	365
259	Wichita	Sedgewick	1653 Colvin Elem	Elementary	K-5.PK (w/IEP),PK,PKAR (3 YO),PKAR (4 YO)	606
259	Wichita	Sedgewick	1658 Earhart Environ Magnet Elem	Elementary	K-5.PK (w/IEP),PK,PKAR (3 YO),PKAR (4 YO)	428
259	Wichita	Sedgewick	1660 Enterprise Elem	Elementary	K-5.PK (w/IEP),PK,PKAR (3 YO),PKAR (4 YO)	452
259	Wichita	Sedgewick	1662 Dodge Literacy Magnet	Elementary	K-5.PK (w/IEP),PK,PKAR (3 YO),PKAR (4 YO)	491
259	Wichita	Sedgewick	1663 Ortiz Elementary School	Elementary	K-5.PK (w/IEP),PK,PKAR (3 YO),PKAR (4 YO)	319
259	Wichita	Sedgewick	1664 Christa McAuliffe Academy	Elementary	K-8.PK (w/IEP),PK,DC,PKAR (3 YO),PKAR (4 YO)	879
259	Wichita	Sedgewick	1669 Brent Opportunity Academy	Elementary	9-12	33
259	Wichita	Sedgewick	1674 Franklin Elem	Elementary	K-5.PK (w/IEP),PK,PKAR (3 YO),PKAR (4 YO)	334
259	Wichita	Sedgewick	1677 Gammon Elem	Elementary	K-5.PK (w/IEP),PK,PKAR (3 YO),PKAR (4 YO)	409
259	Wichita	Sedgewick	1678 Gardner Elem	Elementary	K-5.PK (w/IEP),PK,PKAR (3 YO),PKAR (4 YO)	407
259	Wichita	Sedgewick	1684 Griffin Elem	Elementary	K-5.PK (w/IEP),PK,PKAR (3 YO),PKAR (4 YO)	442
259	Wichita	Sedgewick	1686 Price-Harris Communications Magnet	Elementary	K-5.PK (w/IEP),PK,PKAR (3 YO),PKAR (4 YO)	398
259	Wichita	Sedgewick	1688 Harry Street Elem	Elementary	K-5.PK (w/IEP),PK,PKAR (3 YO),PKAR (4 YO)	364
259	Wichita	Sedgewick	1690 Hyde Intl Studies/Common Elem Magnet	Elementary	K-5.PK (w/IEP),PK,PKAR (3 YO),PKAR (4 YO)	276
259	Wichita	Sedgewick	1693 Soabitt Multimedia Magnet	Elementary	K-5.PK (w/IEP),PK,PKAR (3 YO),PKAR (4 YO)	442
259	Wichita	Sedgewick	1694 Irving Elementary	Elementary	K-5.PK (w/IEP),PK,PKAR (3 YO),PKAR (4 YO)	316
259	Wichita	Sedgewick	1695 Iseley Traditional Magnet Elem	Elementary	K-5.PK (w/IEP),PK,PKAR (3 YO),PKAR (4 YO)	596
259	Wichita	Sedgewick	1698 Jefferson Elem	Elementary	K-5.PK (w/IEP),PK,PKAR (3 YO),PKAR (4 YO)	340
259	Wichita	Sedgewick	1704 Kelly Liberal Arts Academy	Elementary	K-5.PK (w/IEP),PK,PKAR (3 YO),PKAR (4 YO)	390
259	Wichita	Sedgewick	1706 Kensler Elem	Elementary	K-5.PK (w/IEP),PK,PKAR (3 YO),PKAR (4 YO)	499
259	Wichita	Sedgewick	1708 Bostic Traditional Magnet Elem	Elementary	K-5	279
259	Wichita	Sedgewick	1710 Enderb STEM and Leadership Magnet	Elementary	K-5.PK (w/IEP),PK,PKAR (3 YO),PKAR (4 YO)	396
259	Wichita	Sedgewick	1712 Lawrence Elem	Elementary	K-5.PK (w/IEP),PK,PKAR (3 YO),PKAR (4 YO)	394
259	Wichita	Sedgewick	1715 Levy Sp Ed Center	Special School	1-12	79
259	Wichita	Sedgewick	1718 Linwood Elementary	Elementary	K-5.PK (w/IEP),PK,PKAR (3 YO),PKAR (4 YO)	425
259	Wichita	Sedgewick	1722 L'Ouverture Computer Technology Magnet	Elementary	K-5.PK (w/IEP),PK,DC,PKAR (3 YO),PKAR (4 YO)	252
259	Wichita	Sedgewick	1736 McCollum Elem	Elementary	K-5.PK (w/IEP),PK,PKAR (3 YO),PKAR (4 YO)	312
259	Wichita	Sedgewick	1740 McLean Science/Tech Magnet Elem	Elementary	K-5.PK (w/IEP),PK,DC,PKAR (3 YO),PKAR (4 YO)	238
259	Wichita	Sedgewick	1741 Minneha Core Knowledge Elem	Elementary	K-5.PK (w/IEP),PK,PKAR (3 YO),PKAR (4 YO)	544
259	Wichita	Sedgewick	1742 Mueller Aerospace/Engineering Discovery Magnet	Elementary	K-5.PK (w/IEP),PK,DC,PKAR (3 YO),PKAR (4 YO)	298
259	Wichita	Sedgewick	1754 O K Elem	Elementary	K-5.PK (w/IEP),PK,PKAR (3 YO),PKAR (4 YO)	298
259	Wichita	Sedgewick	1756 Park Elementary	Elementary	K-5.PK (w/IEP),PK,PKAR (3 YO),PKAR (4 YO)	286
259	Wichita	Sedgewick	1758 Payne Elem	Elementary	K-5.PK (w/IEP),PK,PKAR (3 YO),PKAR (4 YO)	259
259	Wichita	Sedgewick	1767 Peterson Elem	Elementary	K-5.PK (w/IEP),PK,PKAR (3 YO),PKAR (4 YO)	347
259	Wichita	Sedgewick	1768 Riverside Leadership Magnet Elementary	Elementary	K-5.PK (w/IEP),PK,DC,PKAR (3 YO),PKAR (4 YO)	188
259	Wichita	Sedgewick	1772 Seltzer Elem	Elementary	K-5.PK (w/IEP),PK,PKAR (3 YO),PKAR (4 YO)	478
259	Wichita	Sedgewick	1778 Pleasant Valley Elem	Elementary	K-5.PK (w/IEP),PK,PKAR (3 YO),PKAR (4 YO)	611
259	Wichita	Sedgewick	1780 Sowers Alternative High School	High School	9-12.NG	356
259	Wichita	Sedgewick	1782 Stanley Elem	Elementary	K-5.PK (w/IEP),PK,PKAR (3 YO),PKAR (4 YO)	366
259	Wichita	Sedgewick	1785 Stucky Middle School	Middle School	6-8	632
259	Wichita	Sedgewick	1790 Washington Accelerated Learning Elem	Middle School	6-8	445
259	Wichita	Sedgewick	1792 Wells Alternative Middle School	Middle School	6-8	38
259	Wichita	Sedgewick	1796 White Elem	Elementary	K-5.PK (w/IEP),PK,PKAR (3 YO),PKAR (4 YO)	409
259	Wichita	Sedgewick	1798 Anderson Elem	Elementary	K-5.PK (w/IEP),PK,PKAR (3 YO),PKAR (4 YO)	526
259	Wichita	Sedgewick	1800 Woodland Health / Wellness Magnet Elem	Elementary	K-5.PK (w/IEP),PK,PKAR (3 YO),PKAR (4 YO)	343
259	Wichita	Sedgewick	1802 Woodman Elem	Elementary	K-5.PK (w/IEP),PK,PKAR (3 YO),PKAR (4 YO)	580
259	Wichita	Sedgewick	1804 Allison Traditional Magnet Middle	Middle School	6-8	560
259	Wichita	Sedgewick	1806 Brooks Magnet Middle School	Middle School	6-8	532
259	Wichita	Sedgewick	1808 Curtis Middle School	Middle School	6-8	849
259	Wichita	Sedgewick	1810 Coleman Middle School	Middle School	6-8	425
259	Wichita	Sedgewick	1812 Hadley Middle School	Middle School	6-8	608
259	Wichita	Sedgewick	1814 Hamilton Middle School	Middle School	6-8	594
259	Wichita	Sedgewick	1817 Jardine Technology Middle Magnet	Middle School	6-8	527
259	Wichita	Sedgewick	1818 Horace Mann Dual Language Magnet	Elementary	K-8.PK (w/IEP),PK,PKAR (3 YO),PKAR (4 YO)	602
259	Wichita	Sedgewick	1823 Northeast Magnet High School	High School	9-12.NG	667
259	Wichita	Sedgewick	1824 Mayberry Cultural and Fine Arts Magnet Middle	Middle School	6-8	626
259	Wichita	Sedgewick	1828 Pleasant Valley Middle School	Middle School	6-8	636
259	Wichita	Sedgewick	1830 Robinson Middle School	Middle School	6-8	785
259	Wichita	Sedgewick	1833 Wilbur Middle School	Middle School	6-8	814
259	Wichita	Sedgewick	1834 Trussell Middle School	Middle School	6-8	974
259	Wichita	Sedgewick	1835 East High	High School	9-12.NG	2237
259	Wichita	Sedgewick	1837 Wichita Alternative High	High School	9-12.NG	94
259	Wichita	Sedgewick	1838 North High	High School	9-12.NG	2149
259	Wichita	Sedgewick	1840 South High	High School	9-12.NG	1698
259	Wichita	Sedgewick	1842 Southeast High	High School	9-12.NG	2046
259	Wichita	Sedgewick	1844 West High	High School	9-12.NG	1307
259	Wichita	Sedgewick	1846 Heights High	High School	9-12.NG	1232
259	Wichita	Sedgewick	1847 Northwest High	High School	9-12.NG	1363
259	Wichita	Sedgewick	1848 Chisholm Life Skills Center	Special School	10-12.NG	73
260	Derby	Sedgewick	1926 Derby Middle Sch	Middle School	6-8	945
260	Derby	Sedgewick	1927 El Paso Elem	Elementary	K-5.PK (w/IEP),PK,DC,PKAR (4 YO)	265
260	Derby	Sedgewick	1928 Oklahoma Elem	Elementary	K-5.PK (w/IEP),PK,DC,PKAR (4 YO)	222
260	Derby	Sedgewick	1930 Paul B Cooper Elem	Elementary	K-5.PK (w/IEP),PK,DC,PKAR (4 YO)	252
260	Derby	Sedgewick	1934 Swaney Elem	Elementary	K-5.PK (w/IEP),PK,DC,PKAR (4 YO)	382
260	Derby	Sedgewick	1936 Wintetree Elem	Elementary	K-5.PK (w/IEP),PK,DC,PKAR (4 YO)	392
260	Derby	Sedgewick	1941 Derby Hill Elem	Elementary	K-5.PK (w/IEP),PK,DC,PKAR (4 YO)	388
260	Derby	Sedgewick	1942 Derby High School	High School	9-12	2138
260	Derby	Sedgewick	1944 Tanglewood Elem	Elementary	K-5.PK (w/IEP),PK,DC	657
260	Derby	Sedgewick	1945 Park Hill Elementary	Elementary	K-5.PK (w/IEP),PK,DC,PKAR (4 YO)	412
260	Derby	Sedgewick	1975 Derby North Middle School	Middle School	6-8	793
260	Derby	Sedgewick	2106 Stone Creek Elementary	Elementary	K-5.PK (w/IEP),PK,PKAR (4 YO)	407
260	Derby	Sedgewick	2297 Derby Virtual School	Other	K-12	13
261	Haysville	Sedgewick	1954 Haysville Dist Sedgewick Co	Central Office	N/A - Central Office	39
261	Haysville	Sedgewick	1955 Haysville West Middle School	Middle School	6-8	529
261	Haysville	Sedgewick	1956 Campus High Haysville	High School	9-12.NG	1888
261	Haysville	Sedgewick	1958 Haysville Middle School	Middle School	6-8	761
261	Haysville	Sedgewick	1960 Freeman Elem	Elementary	K-5.PK (w/IEP),PK,PKAR (4 YO)	403
261	Haysville	Sedgewick	1961 Prairie Elementary School	Elementary	K-5.PK (w/IEP),PK	446
261	Haysville	Sedgewick	1964 Nelson Elem	Elementary	K-5.PK (w/IEP),PK,PKAR (4 YO)	491
261	Haysville	Sedgewick	1965 Ruth Clark Elementary K-5	Elementary	K-5.PK (w/IEP),PK,PKAR (4 YO)	344
261	Haysville	Sedgewick	1966 Clatwell Elem	Elementary	K-5.PK (w/IEP),PK,PKAR (4 YO)	407
261	Haysville	Sedgewick	1968 Rex Elem	Elementary	K-5.PK (w/IEP),PK,PKAR (4 YO)	479
262	Valley Center Pub Sch	Sedgewick	1977 Valley Center Intermediate School	Elementary	4-5	468
262	Valley Center Pub Sch	Sedgewick	1980 Abilene Elem	Elementary	K-3.PK (w/IEP),PK,PKAR (3 YO),PKAR (4 YO)	247
262	Valley Center Pub Sch	Sedgewick	1981 Wheatland Elem	Elementary	6-8	250
262	Valley Center Pub Sch	Sedgewick	1984 West Elem	Elementary	K-3	287
262	Valley Center Pub Sch	Sedgewick	1985 Valley Center Middle School	Middle School	6-8	736
262	Valley Center Pub Sch	Sedgewick	1988 Valley Center High	High School	9-12	944
262	Valley Center Pub Sch	Sedgewick	2007 The Learning Center	High School	6-12.NG	67
263	Mulvane	Sedgewick	1988 Mulvane Dist Sedgewick Co	Central Office	N/A - Central Office	430
263	Mulvane	Sedgewick	1992 Mulvane Elem W D Munson	Elementary	K-2.PK (w/IEP),PK,PKAR (4 YO)	30



263	Mulvane	Sedgewick	1996 Mulvane High	High School	9-12	553
263	Mulvane	Sedgewick	1997 Mulvane Middle School	Middle School	6-8	413
263	Mulvane	Sedgewick	1998 Mulvane Grade School	Elementary	K-5	390
264	Clearwater	Sedgewick	2011 Clearwater Elementary West	Elementary	K-3,PK (w/IEP),PK,PKAR (4 Y0)	333
264	Clearwater	Sedgewick	2012 Clearwater Intermediate - Middle School	Middle School	4-12	441
264	Clearwater	Sedgewick	2014 Clearwater High	High School	9-12,NG	360
265	Goddard	Sedgewick	2025 Clark Davidson Elem	Elementary	K-4,PK (w/IEP),PKAR (4 Y0)	428
265	Goddard	Sedgewick	2026 Oak Street Elementary School K-4	Elementary	K-4	365
265	Goddard	Sedgewick	2027 Goddard Middle School	Middle School	7-8	531
265	Goddard	Sedgewick	2028 Challenger Intermediate School	Elementary	5-6	428
265	Goddard	Sedgewick	2029 Dwight D. Eisenhower Middle School	Middle School	7-8	638
265	Goddard	Sedgewick	2030 Goddard High	High School	9-12	894
265	Goddard	Sedgewick	2033 Amelia Earhart Elementary School	Elementary	K-4,PK (w/IEP)	485
265	Goddard	Sedgewick	2034 Discovery Intermediate School	Elementary	5-6	458
265	Goddard	Sedgewick	2035 Explorer Elementary School	Elementary	K-4,PK (w/IEP),PKAR (4 Y0)	496
265	Goddard	Sedgewick	2069 Apollo Elementary School	Elementary	K-4,PK (w/IEP),PKAR (4 Y0)	531
265	Goddard	Sedgewick	2073 Eisenhower High School	High School	9-12,NG	962
265	Goddard	Sedgewick	2188 USD 355 - Goddard Virtual School	High School	6-12,NG	95
266	Maize	Sedgewick	2042 Maize Dist. Sedgewick Co	Central Office	N/A - Central Office	1
266	Maize	Sedgewick	2043 Pray-Woodman Elementary	Elementary	K-5	481
266	Maize	Sedgewick	2044 Maize Middle School	Middle School	7-8	711
266	Maize	Sedgewick	2045 Maize South Elementary	Elementary	K-4	531
266	Maize	Sedgewick	2046 Maize Elementary	Elementary	K-4	412
266	Maize	Sedgewick	2047 Maize South Middle School	Middle School	7-8	534
266	Maize	Sedgewick	2050 Maize Sr High	High School	9-12	1227
266	Maize	Sedgewick	2051 Maize Central Elementary	Elementary	K-4	511
266	Maize	Sedgewick	2052 Maize South High School	High School	9-12	1111
266	Maize	Sedgewick	2075 Vermillion Elementary School	Elementary	K-4,PK (w/IEP),PK,PKAR (3 Y0),PKAR (4 Y0)	836
266	Maize	Sedgewick	2076 Maize Virtual Preparatory School	Elementary	K-12	506
266	Maize	Sedgewick	2161 Maize Intermediate School	Middle School	6-12	634
266	Maize	Sedgewick	2162 Maize South Intermediate School	Middle School	5-6	497
267	Renwick	Sedgewick	2062 Andale Elem-Middle	Elementary	K-8,PK (w/IEP),PK,PKAR (3 Y0),PKAR (4 Y0)	432
267	Renwick	Sedgewick	2064 Andale High	High School	9-12	369
267	Renwick	Sedgewick	2066 Colwich Elementary	Elementary	K-5,PK (w/IEP),PK,PKAR (3 Y0),PKAR (4 Y0)	256
267	Renwick	Sedgewick	2068 Garden Plain Elem	Elementary	K-8,PK (w/IEP),PK,PKAR (3 Y0),PKAR (4 Y0)	416
267	Renwick	Sedgewick	2070 Garden Plain High	High School	9-12	169
267	Renwick	Sedgewick	2071 St. Marks School	Elementary	K-8,PK (w/IEP)	329
268	Cheney	Sedgewick	2090 Cheney Elem	Elementary	K-8,PK (w/IEP),PK,PKAR (3 Y0),PKAR (4 Y0)	405
268	Cheney	Sedgewick	2091 Cheney Middle School 6-8	Middle School	6-8	170
268	Cheney	Sedgewick	2092 Cheney High	High School	9-12	252
269	Palco	Rooks	2110 Palco Jr. High	Junior High School	6-8	16
269	Palco	Rooks	2111 Damar Elementary School	Elementary	K-5,PK (w/IEP),PK,PKAR (3 Y0),PKAR (4 Y0)	44
269	Palco	Rooks	2116 Palco High	High School	9-12	29
270	Plainville	Rooks	2136 Plainville Elem	Elementary	K-6,PK (w/IEP),PK,PKAR (3 Y0),PKAR (4 Y0)	196
270	Plainville	Rooks	2138 Plainville High	High School	9-12	166
271	Stockton	Rooks	2156 Stockton Elem	Elementary	K-7,PK (w/IEP),PK,PKAR (3 Y0),PKAR (4 Y0)	220
271	Stockton	Rooks	2158 Stockton High	High School	8-12,NG	117
272	Waconda	Mitchell	2171 Lakeside Elementary	Elementary	K-5,PK (w/IEP),PK,PKAR (3 Y0),PKAR (4 Y0)	149
272	Waconda	Mitchell	2176 Lakeside Junior/Senior High School	High School	6-12,NG	141
272	Waconda	Mitchell	2179 Tipton Community School	Elementary	K-8	48
273	Beloit	Mitchell	2210 Beloit Dist Mitchell Co	Central Office	N/A - Central Office	1
273	Beloit	Mitchell	2214 Beloit Elem	Elementary	K-6,PK (w/IEP),PK,DC,PKAR (3 Y0),PKAR (4 Y0)	493
273	Beloit	Mitchell	2218 Beloit Jr-Sr High	High School	9-12	259
274	Oakley	Logan	2262 Oakley Elem	Elementary	K-4,PK (w/IEP),PK	189
274	Oakley	Logan	2266 Oakley Sr High	High School	9-12	125
274	Oakley	Logan	2268 Oakley Middle School	Middle School	5-8	136
275	Triplains	Logan	2288 Winona ELEM	Elementary	K-8,PK (w/IEP),PK	52
275	Triplains	Logan	2288 Winona High	High School	9-12	22
281	Graham County	Graham	2407 Hill City Junior-Senior High	High School	7-12	179
281	Graham County	Graham	2412 Hill City Elem	Elementary	K-6,PK (w/IEP),PK,PKAR (3 Y0),PKAR (4 Y0)	223
282	West Elk	Elk	2436 West Elk Schools	High School	K-6,PK (w/IEP),NG,PK,PKAR (4 Y0)	386
282	West Elk	Elk	2437 West Elk Virtual Academy	Other	K-12	300
283	Elk Valley	Elk	2470 Elk Valley Elementary	Elementary	K-5,PK (w/IEP),PK,DC,PKAR (3 Y0),PKAR (4 Y0)	60
283	Elk Valley	Elk	2472 Elk Valley High School	High School	6-12	41
284	Chase County	Chase	2480 Chase County Junior/Senior High School	High School	7-12	158
284	Chase County	Chase	2491 Chase County Elementary School	Elementary	K-6,PK (w/IEP),PK,PKAR (4 Y0)	216
285	Cedar Vale	Chautauqua	2518 Cedar Vale Elem	Elementary	K-5,PK (w/IEP),PK,PKAR (3 Y0),PKAR (4 Y0)	72
285	Cedar Vale	Chautauqua	2520 Cedar Vale High	High School	6-12	65
286	Chautauqua Co Community	Chautauqua	2544 Sedan Elem	Elementary	K-6,PK (w/IEP),PK,PKAR (3 Y0),PKAR (4 Y0)	215
286	Chautauqua Co Community	Chautauqua	2546 Sedan High	High School	7-12	188
287	West Franklin	Franklin	2559 Appanose Elementary School	Elementary	K-5,PK (w/IEP),PK,PKAR (4 Y0)	188
287	West Franklin	Franklin	2563 West Franklin Middle School	Middle School	6-8	136
287	West Franklin	Franklin	2564 Williamsburg Elementary School	Elementary	K-5,PK (w/IEP),PK,PKAR (4 Y0)	122
287	West Franklin	Franklin	2569 West Franklin High School	High School	9-12	204
288	Central Heights	Franklin	2584 Central Heights High	High School	6-12,NG	276
288	Central Heights	Franklin	2585 Central Heights Elem	Elementary	K-5,PK (w/IEP),PK,PKAR (4 Y0)	248
289	Wellsville	Franklin	2620 Wellsville Elem	Elementary	K-5,PK (w/IEP),PK,PKAR (3 Y0),PKAR (4 Y0)	383
289	Wellsville	Franklin	2621 Wellsville Middle School	Middle School	6-8	202
289	Wellsville	Franklin	2622 Wellsville High	High School	9-12,NG	229
290	Ottawa	Franklin	2634 Ottawa Dist Franklin Co	Central Office	N/A - Central Office	9
290	Ottawa	Franklin	2644 Garfield Elem	Elementary	K-5,PK (w/IEP),PK,PKAR (3 Y0),PKAR (4 Y0)	384
290	Ottawa	Franklin	2648 Lincoln Elem	Elementary	K-5,PK (w/IEP),PK,PKAR (3 Y0),PKAR (4 Y0)	349
290	Ottawa	Franklin	2650 Ottawa Middle School	Middle School	6-8	513
290	Ottawa	Franklin	2652 Ottawa Sr High	High School	7-12,NG	790
290	Ottawa	Franklin	2658 Sunflower Elementary School	Elementary	K-5,PK (w/IEP),PK,PKAR (3 Y0),PKAR (4 Y0)	334
290	Ottawa	Franklin	2659 Ottawa Virtual School	Other	6-12	20
291	Grinnell Public Schools	Gove	2664 Grinnell Dist Gove Co	Central Office	N/A - Central Office	15
291	Grinnell Public Schools	Gove	2666 Grinnell Grade School	Elementary	K-5,PK (w/IEP),PK	40
291	Grinnell Public Schools	Gove	2671 Grinnell Middle School	Middle School	5-8	159
292	Wheatland	Gove	2682 Wheatland Dist Gove Co	Central Office	N/A - Central Office	39
292	Wheatland	Gove	2689 Wheatland Elementary School	Elementary	K-4,PK (w/IEP),PK	49
292	Wheatland	Gove	2691 Wheatland High School	High School	7-12	138
293	Quinter Public Schools	Gove	2710 Quinter Elem	Elementary	K-6,PK (w/IEP),PK,PKAR (4 Y0)	188
293	Quinter Public Schools	Gove	2712 Quinter Jr-Sr High	High School	7-12	133
294	Oberlin	Decatur	2738 Oberlin Elem	Elementary	K-5,PK (w/IEP),PK,DC,PKAR (3 Y0),PKAR (4 Y0)	259
294	Oberlin	Decatur	2740 Decatur Community Jr/Sr High	High School	7-12	138
297	St Francis Comm Sch	Cheyenne	2812 St Francis Elem	Elementary	K-5,PK (w/IEP)	147
297	St Francis Comm Sch	Cheyenne	2816 St Francis High	High School	6-12	139
298	Lincoln	Lincoln	2828 Lincoln Dist Lincoln Co	Central Office	N/A - Central Office	9
298	Lincoln	Lincoln	2840 Lincoln Elem	Elementary	K-5,PK (w/IEP),PK,PKAR (3 Y0),PKAR (4 Y0)	161
298	Lincoln	Lincoln	2842 Lincoln Jr/Sr High	High School	6-12	175
299	Sylvan Grove	Lincoln	2860 Lucas/Sylvan Elementary Unified	Elementary	K-6,PK (w/IEP),PK,PKAR (3 Y0),PKAR (4 Y0)	133
299	Sylvan Grove	Lincoln	2861 Sylvan-Lucas Unified Jr - Sr	High School	7-12	120
300	Comanche County	Comanche	2890 South Central High School	High School	9-12	74
300	Comanche County	Comanche	2892 South Central Elementary School	Elementary	K-5,PK (w/IEP),PK,PKAR (3 Y0),PKAR (4 Y0)	182
300	Comanche County	Comanche	2894 South Central Middle School	Middle School	6-8	69
303	Ness City	Ness	2940 Ness City Elem	Elementary	K-6,PK (w/IEP),PK,PKAR (3 Y0),PKAR (4 Y0)	160
303	Ness City	Ness	2952 Ness City High	High School	7-12,NG	143
305	Salina	Saline	2982 Salina Dist Saline Co	Central Office	N/A - Central Office	204
305	Salina	Saline	2986 Coronado Elem	Elementary	K-5,PK (w/IEP),PK,PKAR (3 Y0),PKAR (4 Y0)	406
305	Salina	Saline	2990 Heusser Elem	Elementary	K-5,PK (w/IEP),PK,PKAR (3 Y0),PKAR (4 Y0)	395
305	Salina	Saline	3000 Meadowlark Ridge Elem	Elementary	K-5,PK (w/IEP),PK,PKAR (3 Y0),PKAR (4 Y0)	415
305	Salina	Saline	3002 Oakdale Elem	Elementary	K-5,PK (w/IEP),PK,PKAR (3 Y0),PKAR (4 Y0)	298
305	Salina	Saline	3006 Schilling Elem	Elementary	K-5,PK (w/IEP),PK,PKAR (3 Y0),PKAR (4 Y0)	374
305	Salina	Saline	3014 Stewart Elem	Elementary	K-5,PK (w/IEP),PK,PKAR (3 Y0),PKAR (4 Y0)	413
305	Salina	Saline	3018 Sunset Elem	Elementary	K-5,PK (w/IEP),PK,PKAR (3 Y0),PKAR (4 Y0)	358
305	Salina	Saline	3020 Cottonwood Elementary School	Elementary	K-5,PK (w/IEP),PK,PKAR (3 Y0),PKAR (4 Y0)	390
305	Salina	Saline	3022 Lakewood Middle School	Middle School	6-8	720
305	Salina	Saline	3023 Salina Virtual Innovation Academy	Other	K-12	119
305	Salina	Saline	3024 Salina South Middle	Middle School	6-8	834
305	Salina	Saline	3026 Salina High Central	High School	9-12	1008
305	Salina	Saline	3027 Salina High South	High School	9-12	1039
306	Southeast Of Saline	Saline	3052 Southeast Saline High	High School	7-12,NG	336
306	Southeast Of Saline	Saline	3056 Southeast Saline Elem	Elementary	K-6,PK (w/IEP),PK,DC,PKAR (3 Y0),PKAR (4 Y0)	358
307	Ell-Saline	Saline	3080 Ell-Saline Middle/High School	High School	7-12	197
307	Ell-Saline	Saline	3082 Ell-Saline Elementary	Elementary	K-6,PK (w/IEP),PK	235
308	Hutchinson Public Schools	Reno	3098 Hutchinson Dist Reno Co	Central Office	N/A - Central Office	276
308	Hutchinson Public Schools	Reno	3101 Hutchinson Magnet School at Allen	Elementary	K-6,PK (w/IEP)	245
308	Hutchinson Public Schools	Reno	3106 Faris Elementary	Elementary	K-8,PK (w/IEP),PK,PKAR (3 Y0),PKAR (4 Y0)	281
308	Hutchinson Public Schools	Reno	3109 Graber Elementary	Elementary	K-6,PK (w/IEP),PK,PKAR (3 Y0)	274
308	Hutchinson Public Schools	Reno	3114 Lincoln Elementary School	Elementary	K-6,PK (w/IEP),PK,PKAR (3 Y0),PKAR (4 Y0)	241
308	Hutchinson Public Schools	Reno	3116 McCandless Elementary	Elementary	K-6,PK (w/IEP),PK,PKAR (3 Y0),PKAR (4 Y0)	204
308	Hutchinson Public Schools	Reno	3118 Morgan Elementary	Elementary	K-6,PK (w/IEP),PK,PKAR (3 Y0),PKAR (4 Y0)	408
308	Hutchinson Public Schools	Reno	3124 Wiley Elementary	Elementary	K-6,PK (w/IEP),PK,PKAR (3 Y0),PKAR (4 Y0)	285
308	Hutchinson Public Schools	Reno	3130 Hutchinson Middle School 8	Middle School	7-8	307
308	Hutchinson Public Schools	Reno	3134 Hutchinson High School	High School	7-12,PK (w/IEP),PK,DC	1325
308	Hutchinson Public Schools	Reno	3139 Hutchinson Middle School 7	Middle School	7-8	322
308	Hutchinson Public Schools	Reno	3140 Hutchinson Virtual School	Other	7-12,NG	176
309	Nickerson	Reno	3164 Nickerson Elem	Elementary	K-6,PK (w/IEP),PK,PKAR (3 Y0),PKAR (4 Y0)	221
309	Nickerson	Reno	3166 Nickerson High	High School	9-12,NG	300
309	Nickerson	Reno	3168 Reno Valley Middle School	Middle School	7-8	357
309	Nickerson	Reno	3170 South Hutchinson Elem	Elementary	K-6,PK (w/IEP),PK,PKAR (3 Y0),PKAR (4 Y0)	338
309	Nickerson	Reno	3171 Central State Academy	Other	K-12,NG	108
310	Fairfield	Reno	3191 Fairfield Schools	High School	K-12,PK (w/IEP),PK,PKAR (3 Y0),PKAR (4 Y0)	284
311	Pretty Prairie	Reno	3214 Pretty Prairie Elem	Elementary	K-6,PK (w/IEP),PK,PKAR (3 Y0),PKAR (4 Y0)	140
311	Pretty Prairie	Reno	3220 Pretty Prairie High	High School	9-12,NG	86
311	Pretty Prairie	Reno	3222 Pretty Prairie Middle	Middle School	5-8	92
312	Haven Public Schools	Reno	3230 Haven Dist Reno Co	Central Office	N/A - Central Office	6
312	Haven Public Schools	Reno	3232 Haven Elem	Elementary	K-6,PK (w/IEP),PK,PKAR (4 Y0)	383
312	Haven Public Schools	Reno	3233 Haven Middle School	Middle School	7-8	98
312	Haven Public Schools	Reno	3234 Haven High	High School	9-12	229
312	Haven Public Schools	Reno	3238 Yoder Charter Elem School	Elementary	K-8,PK (w/IEP),PKAR (3 Y0),PKAR (4 Y0)	48
312	Haven Public Schools	Reno	3262 Haven Virtual Academy	Other	7-12,NG	48
313	Buhler	Reno	3250 Buhler Dist Reno Co	Central Office	N/A - Central Office	6
313	Buhler	Reno	3252 Buhler Elem	Elementary	K-5,PK (w/IEP),PK,PKAR (3 Y0),PKAR (4 Y0)	244

313	Buhler	Reno	3254 Buhler High	High School	9-12.NG	663
313	Buhler	Reno	3261 Plum Creek Elementary	Elementary	K-5.PK (w/IEP),PK,PKAR (3 YOL),PKAR (4 YOL)	428
313	Buhler	Reno	3262 Prairie Hills Middle	Middle School	6-8	537
313	Buhler	Reno	3264 Union Valley Elem	Elementary	K-5.PK (w/IEP),PK,PKAR (3 YOL),PKAR (4 YOL)	472
313	Buhler	Reno	3265 Ad Astra Virtual Academy	Other	K-12	51
314	Brewster	Thomas	3276 Brewster Elem	Elementary	K-8.PK (w/IEP),PK,PKAR (4 YOL)	90
314	Brewster	Thomas	3277 Brewster High	High School	9-12	51
315	Colby Public Schools	Thomas	3290 Colby Elem	Elementary	K-4.PK (w/IEP),PK,PKAR (3 YOL),PKAR (4 YOL)	418
315	Colby Public Schools	Thomas	3292 Colby Middle School	Middle School	5-8	278
315	Colby Public Schools	Thomas	3294 Colby Senior High	High School	9-12	287
316	Golden Plains	Thomas	3314 Golden Plains Middle	Middle School	6-8	34
316	Golden Plains	Thomas	3316 Golden Plains High	High School	9-12	65
316	Golden Plains	Thomas	3318 Golden Plains Elem	Elementary	K-5.PK (w/IEP),PK,PKAR (4 YOL)	85
320	Wamego	Pottawatomie	3386 Wamego Dist Pottawatomie Co	Central Office	N/A - Central Office	0
320	Wamego	Pottawatomie	3388 Wamego Middle School	Middle School	6-8	353
320	Wamego	Pottawatomie	3394 Wamego High School Virtual School	High School	9-12.NG	23
320	Wamego	Pottawatomie	3396 Central Elem	Elementary	K-2.PK (w/IEP),PK	412
320	Wamego	Pottawatomie	3398 Wamego High	High School	9-12	508
320	Wamego	Pottawatomie	3399 West Elem	Elementary	3-5	379
321	Kaw Valley	Pottawatomie	3414 St Marys Dist Pottawatomie Co	Central Office	N/A - Central Office	4
321	Kaw Valley	Pottawatomie	3426 Rossville Elem	Elementary	K-6.PK (w/IEP),PK,PKAR (3 YOL),PKAR (4 YOL)	343
321	Kaw Valley	Pottawatomie	3428 Rossville Jr-Sr High School	High School	7-12	258
321	Kaw Valley	Pottawatomie	3430 St Marys Elem	Elementary	K-6.PK (w/IEP),PK,PKAR (3 YOL),PKAR (4 YOL)	263
321	Kaw Valley	Pottawatomie	3432 St Marys Junior Senior High	High School	7-12	262
322	Onaga-Havensville-Wheaton	Pottawatomie	3456 Onaga Elem	Elementary	K-8.PK (w/IEP),PK,PKAR (3 YOL),PKAR (4 YOL)	248
322	Onaga-Havensville-Wheaton	Pottawatomie	3458 Onaga Senior High	High School	9-12	282
323	Rock Creek	Pottawatomie	3478 Rock Creek USD 323	Central Office	N/A - Central Office	18
323	Rock Creek	Pottawatomie	3485 Rock Creek Middle School	Middle School	5-8	423
323	Rock Creek	Pottawatomie	3488 St George Elem	Elementary	K-4.PK (w/IEP),PK,PKAR (4 YOL)	377
323	Rock Creek	Pottawatomie	3492 Westmoreland Elem	Elementary	K-6.PK (w/IEP),PK,PKAR (4 YOL)	129
323	Rock Creek	Pottawatomie	3495 Rock Creek High School	High School	9-12	316
325	Phillipsburg	Phillips	3538 Phillipsburg Elem	Elementary	K-4.PK (w/IEP)	201
325	Phillipsburg	Phillips	3540 Phillipsburg Middle	Middle School	5-8	180
325	Phillipsburg	Phillips	3542 Phillipsburg High	High School	9-12	352
326	Logan	Phillips	3562 Logan Elem	Elementary	K-6.PK (w/IEP),PK,PKAR (4 YOL)	85
326	Logan	Phillips	3564 Logan High	High School	7-12	2
327	Ellsworth	Ellsworth	3578 Ellsworth-Kanopolis Dist Ellsw Co	Central Office	N/A - Central Office	2
327	Ellsworth	Ellsworth	3598 Ellsworth High	High School	K-6.PK (w/IEP),PK,PKAR (3 YOL),PKAR (4 YOL)	234
327	Ellsworth	Ellsworth	3600 Kanopolis Middle	Middle School	5-6	107
329	Wabaussee	Wabaussee	3650 Alma Elementary School	Elementary	K-5.PK (w/IEP),PK,PKAR (3 YOL),PKAR (4 YOL)	122
329	Wabaussee	Wabaussee	3652 Wabaussee Sr High	High School	9-12	135
329	Wabaussee	Wabaussee	3665 Wabaussee Junior High	Junior High School	6-8	75
329	Wabaussee	Wabaussee	3667 Maple Hill Elem	Elementary	K-5.PK (w/IEP),PK,PKAR (3 YOL),PKAR (4 YOL)	92
330	Mission Valley	Wabaussee	3686 Mission Valley Junior and Senior High School	High School	9-12.NG	220
330	Mission Valley	Wabaussee	3687 Mission Valley Elementary	Elementary	K-6.PK (w/IEP),PK,PKAR (4 YOL)	344
331	Kingman - Norwich	Kingman	3709 Kingman Elementary School	Elementary	K-6.PK (w/IEP),PK,PKAR (3 YOL),PKAR (4 YOL)	233
331	Kingman - Norwich	Kingman	3710 Kingman Middle School	Middle School	7-8	88
331	Kingman - Norwich	Kingman	3711 Norwich Middle School	Middle School	7-8	43
331	Kingman - Norwich	Kingman	3712 Norwich Elementary School	Elementary	K-6.PK (w/IEP),PK,PKAR (3 YOL),PKAR (4 YOL)	142
331	Kingman - Norwich	Kingman	3713 USD 331 Virtual School	High School	6-12.NG	59
331	Kingman - Norwich	Kingman	3716 Kingman High	High School	9-12	207
331	Kingman - Norwich	Kingman	3724 Norwich High	High School	9-12	75
332	Cunningham	Kingman	3748 Cunningham Elem	Elementary	K-6.PK (w/IEP),PK,PKAR (4 YOL)	150
332	Cunningham	Kingman	3750 Cunningham High	High School	7-12	79
333	Concordia	Cloud	3776 Concordia Dist Cloud Co	Central Office	N/A - Central Office	0
333	Concordia	Cloud	3780 Concordia Elementary	Elementary	K-6.PK (w/IEP),PK,PKAR (4 YOL)	481
333	Concordia	Cloud	3793 Concordia Middle	Middle School	5-6	178
334	Concordia	Cloud	3794 Concordia Jr-Sr High	High School	7-12	486
334	Southern Cloud	Cloud	3832 Glasco Elem	Elementary	K-8.PK (w/IEP),PK,PKAR (4 YOL)	59
334	Southern Cloud	Cloud	3834 Glasco High	High School	9-12	24
334	Southern Cloud	Cloud	3836 Miltonvale Elem	Elementary	K-6.PK (w/IEP),PK,PKAR (4 YOL)	35
334	Southern Cloud	Cloud	3838 Miltonvale High	High School	7-12.NG	40
335	North Jackson	Jackson	3871 Jackson Heights Elementary School	Elementary	K-6.PK (w/IEP),PK,PKAR (4 YOL)	213
335	North Jackson	Jackson	3872 Jackson Heights High School and Middle School	High School	9-12	172
336	Holton	Jackson	3880 Holton Dist Jackson Co	Central Office	N/A - Central Office	66
336	Holton	Jackson	3887 Holton Elementary School	Elementary	K-5.PK (w/IEP),PK,PKAR (3 YOL),PKAR (4 YOL)	522
336	Holton	Jackson	3890 Holton Middle	Middle School	6-8	237
336	Holton	Jackson	3892 Holton High	High School	9-12	330
337	Royal Valley	Jackson	3916 Royal Valley Elementary	Elementary	K-4.PK (w/IEP),PK,PKAR (4 YOL)	357
337	Royal Valley	Jackson	3918 Royal Valley High	High School	9-12.NG	260
337	Royal Valley	Jackson	3921 Royal Valley Middle School	Middle School	6-8	225
338	Valley Falls	Jefferson	3934 Valley Falls Dist Jefferson Co	Central Office	N/A - Central Office	2
338	Valley Falls	Jefferson	3936 Valley Falls Elem	Elementary	K-8.PK (w/IEP),PK,PKAR (3 YOL),PKAR (4 YOL)	286
338	Valley Falls	Jefferson	3938 Valley Falls High	High School	9-12	117
339	Jefferson County North	Jefferson	3948 Jefferson Co North High	High School	9-12.NG	130
339	Jefferson County North	Jefferson	3950 Jefferson County North Elem/Middle	Elementary	K-8.PK (w/IEP),PK,PKAR (3 YOL),PKAR (4 YOL)	314
340	Jefferson West	Jefferson	3966 Jefferson West Dist Jefferson Co	Central Office	N/A - Central Office	1
340	Jefferson West	Jefferson	3970 Jefferson West High	High School	9-12	258
340	Jefferson West	Jefferson	3972 Jefferson West Middle	Middle School	6-8	287
340	Jefferson West	Jefferson	3975 Jefferson West Elementary School	Elementary	K-4.PK (w/IEP)	298
341	Oskaloosa Public Schools	Jefferson	3986 Oskaloosa Dist Jefferson Co	Central Office	N/A - Central Office	3
341	Oskaloosa Public Schools	Jefferson	3988 Oskaloosa Elem	Elementary	K-6.PK (w/IEP),PK,PKAR (4 YOL)	324
341	Oskaloosa Public Schools	Jefferson	3991 Oskaloosa Jr-Sr High School	High School	9-12	265
342	McClouth	Jefferson	4006 McClouth Elem	Elementary	K-5.PK (w/IEP),PK,PKAR (3 YOL),PKAR (4 YOL)	218
342	McClouth	Jefferson	4007 McClouth Middle	Middle School	6-8	82
342	McClouth	Jefferson	4008 McClouth High	High School	9-12	159
343	Perry Public Schools	Jefferson	4018 Perry Dist Jefferson Co	Central Office	N/A - Central Office	6
343	Perry Public Schools	Jefferson	4022 Leocompton Elem	Elementary	K-4.PK (w/IEP),PK,DC,PKAR (3 YOL),PKAR (4 YOL)	292
343	Perry Public Schools	Jefferson	4029 Perry-Leocompton Middle	Middle School	5-8	228
343	Perry Public Schools	Jefferson	4030 Perry Leocompton High	High School	9-12.NG	261
344	Pleasanton	Linn	4038 Pleasanton Elem	Elementary	K-6.PK (w/IEP),PK,PKAR (4 YOL)	195
344	Pleasanton	Linn	4040 Pleasanton High	High School	7-12	171
345	Seaman	Shawnee	4052 Seaman Dist Shawnee Co	Central Office	N/A - Central Office	6
345	Seaman	Shawnee	4054 Logan Elementary	Elementary	K-6	641
345	Seaman	Shawnee	4055 North Fairview	Elementary	K-6	303
345	Seaman	Shawnee	4058 Elmont Elem	Elementary	K-6	333
345	Seaman	Shawnee	4069 Northern Hills Elementary	Elementary	K-6	376
345	Seaman	Shawnee	4072 West Indiana Elem	Elementary	6-8	450
345	Seaman	Shawnee	4075 Seaman Middle School	Middle School	7-8	564
345	Seaman	Shawnee	4076 Seaman High	High School	9-12.NG	1244
346	Jayhawk	Linn	4092 Jayhawk Elementary	Elementary	K-6.PK (w/IEP),PK,PKAR (4 YOL)	305
346	Jayhawk	Linn	4094 Jayhawk Linn High	High School	9-12	244
347	Kinsley-Offler	Edwards	4117 Kinsley Jr/Sr High School	High School	6-12	158
347	Kinsley-Offler	Edwards	4120 Kinsley-Offler Elementary Pre-K-5	Elementary	K-5.PK (w/IEP),PK,PKAR (3 YOL),PKAR (4 YOL)	152
348	Baldwin City	Douglas	4138 Baldwin Dist Douglas Co	Central Office	N/A - Central Office	9
348	Baldwin City	Douglas	4141 Baldwin Junior High School	Junior High School	6-8	227
348	Baldwin City	Douglas	4142 Baldwin High School	High School	9-12.NG	400
348	Baldwin City	Douglas	4150 Baldwin Elementary Primary Center	Elementary	K-2.PK (w/IEP),PK,PKAR (3 YOL),PKAR (4 YOL)	354
348	Baldwin City	Douglas	4151 Baldwin Elementary Intermediate Center	Elementary	3-5	276
349	Stafford	Stafford	4156 Stafford Dist Stafford Co	Central Office	N/A - Central Office	48
349	Stafford	Stafford	4158 Stafford Elementary	Elementary	K-5.PK (w/IEP),PK,PKAR (3 YOL),PKAR (4 YOL)	130
349	Stafford	Stafford	4164 Stafford Middle School/High School	High School	6-12	100
350	St John-Hudson	Stafford	4180 St John Elem	Elementary	K-6.PK (w/IEP),PK,PKAR (3 YOL),PKAR (4 YOL)	209
350	St John-Hudson	Stafford	4182 St John High	High School	7-12.NG	139
351	Macksville	Stafford	4196 Macksville Elem	Elementary	K-6.PK (w/IEP),PK,PKAR (4 YOL)	116
351	Macksville	Stafford	4200 Macksville High	High School	7-12	85
352	Goodland	Sherman	4220 Goodland Dist Sherman Co	Central Office	N/A - Central Office	12
352	Goodland	Sherman	4228 Goodland Jr-Sr High School	High School	7-12	401
352	Goodland	Sherman	4230 North Elementary	Elementary	3-6	250
352	Goodland	Sherman	4233 Goodland Virtual School	High School	7-12.NG	2
352	Goodland	Sherman	4239 West Elementary	Elementary	K-2.PK (w/IEP),PK,DC,PKAR (3 YOL),PKAR (4 YOL)	281
353	Wellington	Sumner	4255 Wellington Virtual School	High School	6-12	1
353	Wellington	Sumner	4260 Eisenhower Elem	Elementary	K-5.PK (w/IEP),PKAR (4 YOL)	251
353	Wellington	Sumner	4266 Kennedy Elem	Elementary	K-5	114
353	Wellington	Sumner	4266 Lincoln Elem	Elementary	K-5	164
353	Wellington	Sumner	4274 Washington Elem	Elementary	K-5	87
353	Wellington	Sumner	4276 Wellington Middle School	Middle School	6-8	378
353	Wellington	Sumner	4280 Wellington High School	High School	9-12	462
355	Ellinwood Public Schools	Barton	4311 Ellinwood Dist Barton Co	Central Office	N/A - Central Office	13
355	Ellinwood Public Schools	Barton	4318 Ellinwood Elem	Elementary	K-6.PK (w/IEP)	239
355	Ellinwood Public Schools	Barton	4320 Ellinwood Middle School	Middle School	7-8	83
355	Ellinwood Public Schools	Barton	4322 Ellinwood High	High School	9-12.NG	136
356	Conway Springs	Sumner	4340 Conway Springs Kyle Trueblood	Elementary	K-5.PK (w/IEP),PK,PKAR (4 YOL)	295
356	Conway Springs	Sumner	4341 Conway Springs Middle School	Middle School	6-8	109
356	Conway Springs	Sumner	4342 Conway Springs High School	High School	9-12.NG	140
357	Belle Plaine	Sumner	4360 Belle Plaine Dist Sumner Co	Central Office	N/A - Central Office	49
357	Belle Plaine	Sumner	4362 Belle Plaine Elem	Elementary	K-6.PK (w/IEP),PK,PKAR (4 YOL)	292
357	Belle Plaine	Sumner	4363 Belle Plaine Middle	Middle School	5-8	188
357	Belle Plaine	Sumner	4364 Belle Plaine High	High School	9-12	167
358	Oxford	Sumner	4379 Oxford Online Virtual School	Other	K-12	45
358	Oxford	Sumner	4388 Oxford Elem	Elementary	K-6.PK (w/IEP),PK,DC,PKAR (4 YOL)	206
358	Oxford	Sumner	4390 Oxford Jr/Sr High	High School	7-12.NG	205
359	Argonia Public Schools	Sumner	4404 Argonia Elem	Elementary	K-5.PK (w/IEP),PK,PKAR (4 YOL)	83
359	Argonia Public Schools	Sumner	4406 Argonia High	High School	9-12	86
360	Caldwell	Sumner	4420 Caldwell Elem	Elementary	K-5.PK (w/IEP),PK,PKAR (3 YOL),PKAR (4 YOL)	147
360	Caldwell	Sumner	4422 Caldwell Secondary School	High School	6-12.NG	110
360	Caldwell	Sumner	4428 Caldwell Secondary School-Chisholm Trail elem	High School	6-12.NG	5
361	Chaparral Schools	Harper	4438 Anthony Elem	Elementary	K-6.PK (w/IEP),PKAR (4 YOL)	79
361	Chaparral Schools	Harper	4441 Chaparral Virtual School	High School	9-12.NG	209
361	Chaparral Schools	Harper	4442 Chaparral Jr/Sr High	High School	7-12	331
361	Chaparral Schools	Harper	4458 Harper Elem	Elementary	K-6.PK (w/IEP),PK,PKAR (4 YOL)	248
362	Prairie View	Linn	4482 Prairie View Dist Linn Co	Central Office	N/A - Central Office	8
362	Prairie View	Linn	4486 Lacyone Elem	Elementary	K-5.PK (w/IEP),PK,PKAR (4 YOL)	209
362	Prairie View	Linn	4502 Parker Elem	Elementary	K-5.PK (w/IEP),PK	210

362	Prairie View	Linn	4504	Prairie View Middle	Middle School	6-8	203
362	Prairie View	Linn	4505	Prairie View High	High School	9-12	279
363	Holcomb	Finney	4516	Holcomb Elem 3 & 5	Elementary	3-5	217
363	Holcomb	Finney	4517	Holcomb Middle	Middle School	6-8	236
363	Holcomb	Finney	4518	Holcomb High	High School	9-12	295
363	Holcomb	Finney	4519	Wiley Elem	Elementary	K-2,PK (w/IEP),PK,PKAR (3 YOL),PKAR (4 YOL)	243
364	Marysville	Marshall	4545	Marysville Elem	Elementary	K-6,PK (w/IEP),PK,PKAR (4 YOL)	439
364	Marysville	Marshall	4548	Marysville Jr/Sr High	High School	7-12	378
365	Garnett	Anderson	4580	Garnett Elementary School	Elementary	K-6,PK (w/IEP),PK,PKAR (3 YOL),PKAR (4 YOL)	420
365	Garnett	Anderson	4592	Greeley Elem	Elementary	K-6,PK (w/IEP),PK	65
365	Garnett	Anderson	4610	Westphalia	Elementary	K-6,PK (w/IEP)	53
365	Garnett	Anderson	4612	Anderson County Jr/Sr High School	High School	7-12	435
366	Woodson	Woodson	4639	Yates Center Elem	Elementary	K-8,PK (w/IEP),PK,PKAR (3 YOL),PKAR (4 YOL)	312
367	Oswatomie	Miami	4645	Yates Center High	High School	9-12,NG	107
367	Oswatomie	Miami	4662	Trojan Elem	Elementary	6-8	363
367	Oswatomie	Miami	4664	Swenson Early Childhood Education Center	Elementary	K,PK (w/IEP),PK,PKAR (3 YOL),PKAR (4 YOL)	167
367	Oswatomie	Miami	4665	Oswatomie Middle School	Middle School	6-8	249
367	Oswatomie	Miami	4666	Oswatomie High	High School	9-12,NG	292
367	Oswatomie	Miami	4671	Oswatomie Virtual School	High School	9-12,NG	15
368	Paola	Miami	4686	Paola Dist Miami Co	Central Office	N/A - Central Office	59
368	Paola	Miami	4690	Sunflower Elem	Elementary	3-5	384
368	Paola	Miami	4694	Paola Middle	Middle School	6-8	413
368	Paola	Miami	4700	Paola High	High School	9-12	569
368	Paola	Miami	4701	Cottonwood Elem	Elementary	K-2,PK (w/IEP),PK	377
369	Burton	Harvey	4734	Burton Elem	Elementary	K-5,PK (w/IEP),PKAR (4 YOL)	74
369	Burton	Harvey	4738	Burton MS/HS	High School	7-8	114
371	Montezuma	Gray	4760	Montezuma Dist Gray Co	Central Office	N/A - Central Office	38
371	Montezuma	Gray	4762	Montezuma Elem	Elementary	K-5,PK (w/IEP),PK,PKAR (4 YOL)	99
371	Montezuma	Gray	4764	South Gray High	High School	9-12	30
371	Montezuma	Gray	4767	South Gray Community Learning Center	High School	9-12,NG	60
372	Silver Lake	Shawnee	4776	Silver Lake Elem	Elementary	K-6,PK (w/IEP),PK,PKAR (3 YOL),PKAR (4 YOL)	383
372	Silver Lake	Shawnee	4778	Silver Lake Jr-Sr High	High School	7-12,NG	336
373	Newton	Harvey	4788	Newton Dist Harvey Co	Central Office	N/A - Central Office	28
373	Newton	Harvey	4810	Newton Sr High	High School	9-12,NG	963
373	Newton	Harvey	4821	Chisholm Middle School	Middle School	7-8	482
373	Newton	Harvey	4823	Northridge Elementary	Elementary	K-4,PK (w/IEP),PK,PKAR (3 YOL)	303
373	Newton	Harvey	4824	Santa Fe S/o Center	Elementary	5-6	487
373	Newton	Harvey	4827	State Creek Elementary	Elementary	6-8	272
373	Newton	Harvey	4831	South Breeze Elementary	Elementary	K-4,PKAR (4 YOL)	321
373	Newton	Harvey	4842	Sunset Elementary	Elementary	K-4	212
373	Newton	Harvey	4843	Walton Rural Life Center	Elementary	K-4	158
373	Newton	Harvey	4847	Opportunity Academy	Special School	5-12	51
374	Sublette	Haskell	4834	Sublette Elem	Elementary	K-6,PK (w/IEP),PKAR (4 YOL)	204
374	Sublette	Haskell	4835	Sublette High	High School	9-12	113
374	Sublette	Haskell	4838	Sublette Middle	Middle School	6-8	58
375	Circle	Butler	4848	Circle Dist Butler Co	Central Office	N/A - Central Office	28
375	Circle	Butler	4850	Circle Benton Elementary	Elementary	K-6,PK (w/IEP),PK,PKAR (4 YOL)	267
375	Circle	Butler	4852	Circle High	High School	9-12	583
375	Circle	Butler	4854	Circle Oil Hill Elementary	Elementary	213,PK (w/IEP)	213
375	Circle	Butler	4856	Circle Towanda Elementary	Elementary	K-6,PK (w/IEP),PK,PKAR (4 YOL)	300
375	Circle	Butler	4859	Circle Middle School	Middle School	7-8	312
375	Circle	Butler	4879	Circle Greenwich Elementary	Elementary	K-6,PK (w/IEP),PK	308
376	Sterling	Rice	4866	Sterling Grade School	Elementary	K-6,PK (w/IEP),PK,PKAR (4 YOL)	271
376	Sterling	Rice	4866	Sterling Junior/High/Senior High	High School	7-12	216
377	Atchison Co Comm Schools	Atchison	4880	Effingham Dist Atchison Co	Central Office	N/A - Central Office	8
377	Atchison Co Comm Schools	Atchison	4888	Atchison County Community Elementary School	Elementary	K-6,PK (w/IEP),PK,PKAR (4 YOL)	245
377	Atchison Co Comm Schools	Atchison	4891	Atchison County Community Jr/Sr High	High School	9-12	260
378	Riley County	Riley	4950	Riley County Grade School	Elementary	K-8,PK (w/IEP),PK,DC,PKAR (4 YOL)	496
378	Riley County	Riley	4952	Riley County High School	High School	9-12	211
379	Clay County	Clay	4970	Garfield Elem	Elementary	4-5	159
379	Clay County	Clay	4972	Lincoln Elem	Elementary	K-3,PK (w/IEP),PK,PKAR (4 YOL)	395
379	Clay County	Clay	4973	eLearn 379 Virtual School	High School	6-12	9
379	Clay County	Clay	4974	Clay Center Community Middle	Middle School	6-8	252
379	Clay County	Clay	4976	Clay Center Community High	High School	9-12	341
379	Clay County	Clay	5014	Wakefield Elem	Elementary	6-8	130
379	Clay County	Clay	5016	Wakefield High	High School	9-12	65
380	Vermillion	Marshall	5032	Centralia Elem	Elementary	K-6,PK (w/IEP),PK,PKAR (3 YOL),PKAR (4 YOL)	214
380	Vermillion	Marshall	5034	Centralia High	High School	9-12,NG	127
380	Vermillion	Marshall	5036	Frankfort Elem	Elementary	K-6,PK (w/IEP),PK,PKAR (3 YOL),PKAR (4 YOL)	182
380	Vermillion	Marshall	5038	Frankfort High	High School	7-12,NG	125
381	Spearsville	Ford	5058	Spearsville Elem	Elementary	K-5,PK (w/IEP),PK,PKAR (4 YOL)	165
381	Spearsville	Ford	5060	Spearsville Jr/Sr High	High School	9-12	181
382	Pratt	Pratt	5076	Pratt Dist Pratt Co	Central Office	N/A - Central Office	18
382	Pratt	Pratt	5085	Pratt Learning Center	Other	1-12,NG	24
382	Pratt	Pratt	5088	Southwest Elem	Elementary	K-4,PK (w/IEP),PK,PKAR (3 YOL),PKAR (4 YOL)	541
382	Pratt	Pratt	5090	Liberty Middle School	Middle School	6-8	320
382	Pratt	Pratt	5092	Pratt Sr High	High School	9-12	354
383	Manhattan-Ogden	Riley	5112	Amanda Arnold Elem	Elementary	K-5,PK (w/IEP),PK,PKAR (3 YOL),PKAR (4 YOL)	490
383	Manhattan-Ogden	Riley	5113	Frank V Bergman Elem	Elementary	K-5,PK (w/IEP),PK,PKAR (3 YOL),PKAR (4 YOL)	453
383	Manhattan-Ogden	Riley	5116	Buenmont Elementary School	Elementary	K-5,PK (w/IEP),PK,PKAR (3 YOL),PKAR (4 YOL)	296
383	Manhattan-Ogden	Riley	5124	Lee Elem	Elementary	K-5,PK (w/IEP),PK,PKAR (3 YOL),PKAR (4 YOL)	262
383	Manhattan-Ogden	Riley	5126	Marietta Elem	Elementary	K-5,PK (w/IEP),PK,PKAR (3 YOL),PKAR (4 YOL)	447
383	Manhattan-Ogden	Riley	5128	Northview Elem	Elementary	K-5,PK (w/IEP),PK,PKAR (3 YOL),PKAR (4 YOL)	387
383	Manhattan-Ogden	Riley	5130	Theo Roosevelt Elem	Elementary	K-5,PK (w/IEP),PK,PKAR (3 YOL),PKAR (4 YOL)	420
383	Manhattan-Ogden	Riley	5132	Woodrow Wilson Elem	Elementary	K-5,PK (w/IEP),PK,PKAR (3 YOL),PKAR (4 YOL)	200
383	Manhattan-Ogden	Riley	5135	Susan B Anthony Middle School	Middle School	6-8	733
383	Manhattan-Ogden	Riley	5136	Manhattan High School West/East Campus	High School	9-12,NG	1877
383	Manhattan-Ogden	Riley	5137	Dwight D Eisenhower Middle School	Middle School	6-8	731
383	Manhattan-Ogden	Riley	5138	Ogden Elem	Elementary	K-5,PK (w/IEP),PK,PKAR (3 YOL),PKAR (4 YOL)	158
383	Manhattan-Ogden	Riley	5139	Oliver Brown Elementary	Elementary	K-5,PK (w/IEP),PK,PKAR (3 YOL),PKAR (4 YOL)	300
383	Manhattan-Ogden	Riley	5143	Manhattan Virtual Academy	Other	K-12,NG	233
384	Blue Valley	Riley	5161	McCormick Elementary	Elementary	K-5,PK (w/IEP),PK,PKAR (3 YOL),PKAR (4 YOL)	104
384	Blue Valley	Riley	5164	Randolph Middle	Middle School	5-8	68
384	Blue Valley	Riley	5166	Blue Valley High	High School	9-12	72
385	Andover	Butler	5177	Cottonwood Elementary	Elementary	6-8	439
385	Andover	Butler	5179	Andover Middle School	Middle School	6-8	708
385	Andover	Butler	5180	Andover High	High School	9-12	974
385	Andover	Butler	5181	Robert M. Martin Elementary	Elementary	K-5	526
385	Andover	Butler	5182	Meadowlark Elementary	Elementary	K-5	340
385	Andover	Butler	5183	Prairie Creek Elementary	Elementary	K-5,PK (w/IEP),PK,PKAR (3 YOL)	495
385	Andover	Butler	5184	Sunflower Elementary School	Elementary	K-5,PK (w/IEP)	382
385	Andover	Butler	5186	Andover Central Middle School	Middle School	6-8	567
385	Andover	Butler	5186	Andover Central High School	High School	9-12,NG	895
385	Andover	Butler	5187	Wheatland Elementary	Elementary	K-5,PK (w/IEP)	447
385	Andover	Butler	5204	Andover eCademy	High School	K-12	3150
386	Madison-Virgil	Greenwood	5198	Madison Elem	Elementary	K-6,PK (w/IEP),PK,PKAR (4 YOL)	142
386	Madison-Virgil	Greenwood	5202	Madison High	High School	9-12,NG	110
387	Altoona-Midway	Wilson	5215	Altoona-Midway Elementary	Elementary	K-5,PK (w/IEP),PK,PKAR (3 YOL),PKAR (4 YOL)	75
387	Altoona-Midway	Wilson	5223	Altoona-Midway Middle/High School	Middle School	6-12	92
388	Ellis	Ellis	5232	Ellis Dist Ellis Co	Central Office	N/A - Central Office	2
388	Ellis	Ellis	5238	Washington Elem	Elementary	K-6,PK (w/IEP),PK,PKAR (3 YOL),PKAR (4 YOL)	206
388	Ellis	Ellis	5238	Ellis Jr/Sr High	High School	7-12	182
389	Eureka	Greenwood	5268	Eureka Jr/Sr High	High School	7-12	286
389	Eureka	Greenwood	5287	Marshall Elementary School	Elementary	K-6,PK (w/IEP),PK,PKAR (4 YOL)	316
390	Hamilton	Greenwood	5296	Hamilton Elem	Elementary	K-6,PK,PKAR (4 YOL)	38
390	Hamilton	Greenwood	5298	Hamilton High	High School	7-12,NG	34
392	Osborne County	Osborne	5332	Osborne Elem	Elementary	K-5,PK (w/IEP),PK,PKAR (3 YOL),PKAR (4 YOL)	207
392	Osborne County	Osborne	5334	Osborne Junior/Senior High	High School	6-12,NG	147
393	Solomon	Dickinson	5354	Solomon Elem	Elementary	K-8,PK (w/IEP),PK,PKAR (4 YOL)	273
393	Solomon	Dickinson	5356	Solomon High	High School	9-12,NG	99
394	Rose Hill Public Schools	Butler	5370	Rose Hill Primary	Elementary	K-2,PK (w/IEP),PK,DC,PKAR (4 YOL)	415
394	Rose Hill Public Schools	Butler	5371	Rose Hill Middle	Middle School	6-8	384
394	Rose Hill Public Schools	Butler	5372	Rose Hill High	High School	9-12,NG	572
394	Rose Hill Public Schools	Butler	5374	Rose Hill Intermediate	Elementary	3-5	297
395	LaCrosse	Rush	5382	La Crosse Dist Rush Co	Central Office	N/A - Central Office	2
395	LaCrosse	Rush	5380	La Crosse Elementary	Elementary	K-6,PK (w/IEP)	148
395	LaCrosse	Rush	5390	La Crosse High	High School	9-12	89
395	LaCrosse	Rush	5396	La Crosse Middle School	Middle School	7-8	51
396	Douglas Public Schools	Butler	5411	Leonard S Seal Elem	Elementary	K-5,PK (w/IEP),PK,PKAR (4 YOL)	294
396	Douglas Public Schools	Butler	5413	Marvin Sisk Middle School	Middle School	6-8	135
396	Douglas Public Schools	Butler	5414	Douglas High	High School	9-12,NG	219
397	Centre	Marion	5435	Centre	High School	K-12,PK (w/IEP),PK,PKAR (4 YOL)	172
397	Centre	Marion	5437	Kansas Online Learning Program	Other	K-12,NG	353
398	Peabody-Burns	Marion	5460	Peabody-Burns Elementary	Elementary	K-5,PK (w/IEP),PK,PKAR (4 YOL)	117
398	Peabody-Burns	Marion	5462	Peabody-Burns Jr/Sr High School	High School	6-12,NG,DC	113
399	Paradise	Russell	5486	Natoma Elem	Elementary	K-5,PK (w/IEP),PK,PKAR (4 YOL)	70
400	Smoky Valley	McPherson	5488	Natoma High (6-12)	High School	6-12	58
400	Smoky Valley	McPherson	5498	Smoky Valley Dist McPherson Co	Central Office	N/A - Central Office	13
400	Smoky Valley	McPherson	5498	Smoky Valley Virtual Charter School	High School	K-12,NG	442
400	Smoky Valley	McPherson	5504	Soderstrom Elem	Elementary	K-4,PK (w/IEP),PK,PKAR (4 YOL)	289
400	Smoky Valley	McPherson	5505	Smoky Valley Middle School	Middle School	5-8	249
400	Smoky Valley	McPherson	5506	Smoky Valley High	High School	9-12	258
401	Chase-Raymond	Rice	5534	Chase Elem	Elementary	K-5,PK (w/IEP),PK,PKAR (3 YOL),PKAR (4 YOL)	72
401	Chase-Raymond	Rice	5536	Chase High	High School	9-12	41
401	Chase-Raymond	Rice	5538	Raymond Jr High	Junior High School	6-8	35
402	Auzusta	Butler	5552	Auzusta Dist Butler Co	Central Office	N/A - Central Office	29
402	Auzusta	Butler	5554	Garfield Elem	Elementary	K-5,PK (w/IEP),PK	235
402	Auzusta	Butler	5555	Ewalt Elementary	Elementary	K-5,PK (w/IEP),PK,PKAR (4 YOL)	272
402	Auzusta	Butler	5555	Lincoln Elem	Elementary	K-5,PK (w/IEP),PK	217
402	Auzusta	Butler	5558	Robinson Elem	Elementary	K-5,PK (w/IEP)	164
402	Auzusta	Butler	5560	Auzusta Middle School	Middle School	6-8	479
402	Auzusta	Butler	5562	Auzusta Sr High	High School	9-12	643
403	Otis-Bison	Rush	5582	Otis-Bison Dist Rush Co	Central Office	N/A - Central Office	1
403	Otis-Bison	Rush	5587	SouthWinds Academy	High School	3-12,NG	47
403	Otis-Bison	Rush	5598	Otis-Bison Elementary	Elementary	K-5,PK (w/IEP),PK,DC,PKAR (3 YOL),PKAR (4 YOL)	94

403	Otis-Bison	Rush	5600 Otis-Bison Junior/Senior High School	High School	6-12	96
404	Riverton	Cherokee	5620 Riverton Elem	Elementary	K-5/PK (w/IEP,PK,PKAR (4 YO)	309
404	Riverton	Cherokee	5621 Riverton Middle	Middle School	6-8	153
404	Riverton	Cherokee	5622 Riverton High	High School	9-12	217
405	Lyons	Rice	5632 Lyons Dist Rice Co	Central Office	N/A - Central Office	31
405	Lyons	Rice	5636 Lyons Central Elementary	Elementary	3-5	179
405	Lyons	Rice	5638 Lyons Park Elementary	Elementary	K-5/PK (w/IEP,PK,PKAR (4 YO)	190
405	Lyons	Rice	5640 Lyons Middle School	Middle School	6-8	157
405	Lyons	Rice	5642 Lyons High School	High School	9-12	235
407	Russell County	Russell	5718 Bickerdvke Elem	Elementary	2-5	244
407	Russell County	Russell	5720 Simpson Elem	Elementary	K-5/PK (w/IEP,PK,PKAR (4 YO)	158
407	Russell County	Russell	5722 Ruppenthal Middle	Middle School	6-8	192
407	Russell County	Russell	5724 Russell High	High School	9-12	221
408	Marion-Florence	Marion	5746 Marion Middle	Middle School	6-8	126
408	Marion-Florence	Marion	5748 Marion High	High School	9-12.NG	142
408	Marion-Florence	Marion	5750 Marion Elem	Elementary	K-5/PK (w/IEP,PK,PKAR (3 YO),PKAR (4 YO)	260
409	Atchison Public Schools	Atchison	5758 Atchison Dist Atchison Co	Central Office	N/A - Central Office	10
409	Atchison Public Schools	Atchison	5761 Atchison Elementary School	Elementary	K-5/PK (w/IEP,PK,PKAR (4 YO)	749
409	Atchison Public Schools	Atchison	5770 Atchison High School	High School	9-12	426
409	Atchison Public Schools	Atchison	5775 Central School	Special School	1,4-12.NG	51
409	Atchison Public Schools	Atchison	5776 Atchison Middle School	Middle School	6-8	345
410	Durham-Hillsboro-Lehigh	Marion	5812 Hillsboro Elem	Elementary	K-5/PK (w/IEP,PK,PKAR (4 YO)	306
410	Durham-Hillsboro-Lehigh	Marion	5814 Hillsboro Middle/High School	High School	6-12.NG	308
411	Goessel	Marion	5832 Goessel Dist Marion Co	Central Office	N/A - Central Office	1
411	Goessel	Marion	5834 Goessel Elem	Elementary	K-5/PK (w/IEP,PK,PKAR (4 YO)	123
411	Goessel	Marion	5836 Goessel High	High School	9-12	169
412	Hoxie Community Schools	Sheridan	5852 Hoxie Elem	Elementary	K-6/PK (w/IEP,PK)	244
412	Hoxie Community Schools	Sheridan	5854 Hoxie High	High School	7-12	200
413	Chanute Public Schools	Neosho	5871 Chanute Elementary School	Elementary	K-5/PK (w/IEP,PK,PKAR (4 YO)	779
413	Chanute Public Schools	Neosho	5880 Rostyer Middle School	Middle School	6-8	387
413	Chanute Public Schools	Neosho	5882 Chanute High	High School	9-12	581
413	Chanute Public Schools	Neosho	5884 Chanute Extension Academy	High School	6-12.NG	8
415	Hiawatha	Brown	5926 Hiawatha Dist Brown Co	Central Office	N/A - Central Office	15
415	Hiawatha	Brown	5938 Hiawatha Elem	Elementary	K-5/PK (w/IEP,PK,PKAR (4 YO)	359
415	Hiawatha	Brown	5940 Hiawatha Sr High	High School	9-12.NG	274
415	Hiawatha	Brown	5950 Hiawatha Middle School	Middle School	5-8	296
416	Louisburg	Miami	5964 Louisburg Dist Miami Co	Central Office	N/A - Central Office	27
416	Louisburg	Miami	5970 Broadmoor Elementary	Elementary	1-8	338
416	Louisburg	Miami	5972 Louisburg High	High School	9-12	578
416	Louisburg	Miami	5973 Louisburg Virtual Program	High School	6-12.NG	26
416	Louisburg	Miami	5976 Louisburg Middle School	Middle School	6-8	367
416	Louisburg	Miami	5980 Rockville Elementary School	Elementary	K-5/PK (w/IEP,PK,PKAR (4 YO)	464
417	Morris County	Morris	5986 Council Grove Dist Morris Co	Central Office	N/A - Central Office	3
417	Morris County	Morris	5987 Prairie Heights Elementary School	Elementary	K-6	76
417	Morris County	Morris	5990 Council Grove Elementary School	Elementary	K-5/PK (w/IEP,PK,PKAR (4 YO)	254
417	Morris County	Morris	5994 Council Grove Junior Senior High School	High School	7-12	352
418	McPherson	McPherson	6018 McPherson Dist McPherson Co	Central Office	N/A - Central Office	45
418	McPherson	McPherson	6028 Eisenhower Elementary	Elementary	K-5/PK (w/IEP,PK,PKAR (3 YO),PKAR (4 YO)	256
418	McPherson	McPherson	6030 Lincoln Elem	Elementary	K-5/PK (w/IEP,PK,PKAR (3 YO),PKAR (4 YO)	268
418	McPherson	McPherson	6032 Roosevelt Elem	Elementary	K-5/PK (w/IEP,PK,PKAR (3 YO),PKAR (4 YO)	290
418	McPherson	McPherson	6034 Washington Elem	Elementary	K-5/PK (w/IEP,PK,PKAR (3 YO),PKAR (4 YO)	503
418	McPherson	McPherson	6038 McPherson Middle School	Middle School	6-8	750
418	McPherson	McPherson	6040 McPherson High	High School	9-12	750
419	Canton-Galva	McPherson	6066 Canton-Galva Jr./Sr. High	High School	7-12.NG	127
419	Canton-Galva	McPherson	6070 Canton-Galva Elementary	Elementary	K-6/PK (w/IEP,PK,PKAR (3 YO),PKAR (4 YO)	189
420	Osage City	Osage	6088 Osage City Elem	Elementary	K-5/PK (w/IEP,PK,PKAR (4 YO)	342
420	Osage City	Osage	6090 Osage City High	High School	9-12	288
420	Osage City	Osage	6091 Osage City Middle School	Middle School	6-8	161
421	Lyndon	Osage	6102 Lyndon Elem	Elementary	K-8/PK (w/IEP,PK,PKAR (4 YO)	319
421	Lyndon	Osage	6104 Lyndon High	High School	9-12.NG	133
422	Kiowa County	Kiowa	6112 Kiowa County Elem/Jr. High	Elementary	K-8/PK (w/IEP,PK,PKAR (3 YO),PKAR (4 YO)	244
422	Kiowa County	Kiowa	6121 21st Century Learning Academy/Kiowa County	Other	6-12.NG	108
422	Kiowa County	Kiowa	6122 Kiowa County High School	High School	9-12	69
423	Moundridge	McPherson	6140 Moundridge Elem	Elementary	K-3/PK (w/IEP,PK,PKAR (3 YO),PKAR (4 YO)	176
423	Moundridge	McPherson	6142 Moundridge High	High School	4-8	123
423	Moundridge	McPherson	6146 Moundridge Middle	Middle School	4-8	182
426	Pike Valley	Republic	6190 Pike Valley Dist Republic Co	Central Office	N/A - Central Office	0
426	Pike Valley	Republic	6192 Pike Valley High	Elementary	K-6/PK (w/IEP,PK,PKAR (4 YO)	15
426	Pike Valley	Republic	6194 Pike Valley Jr High	Junior High School	7-8	25
426	Pike Valley	Republic	6206 Pike Valley High	High School	9-12	53
428	Great Bend	Barton	6244 Great Bend Dist Barton Co	Central Office	N/A - Central Office	161
428	Great Bend	Barton	6256 Eisenhower Elem	Elementary	K-5/PK (w/IEP,PK,PKAR (3 YO),PKAR (4 YO)	338
428	Great Bend	Barton	6268 Jefferson Elem	Elementary	K-6/PK (w/IEP,PK,PKAR (3 YO),PKAR (4 YO)	300
428	Great Bend	Barton	6270 Lincoln Elem	Elementary	K-6/PK (w/IEP,PK,PKAR (3 YO),PKAR (4 YO)	230
428	Great Bend	Barton	6274 Park Elem	Elementary	K-6/PK (w/IEP,PK,PKAR (3 YO),PKAR (4 YO)	224
428	Great Bend	Barton	6276 Riley Elem	Elementary	K-5/PK (w/IEP,PK,PKAR (3 YO),PKAR (4 YO)	315
428	Great Bend	Barton	6280 Great Bend Middle School	Middle School	7-8	480
428	Great Bend	Barton	6284 Great Bend High School	High School	9-12	861
429	Troy Public Schools	Doniphan	6324 Troy Elem	Elementary	K-5/PK (w/IEP,PK,PKAR (4 YO)	173
429	Troy Public Schools	Doniphan	6326 Troy High and Middle School	High School	9-12	170
430	South Brown County	Brown	6344 Everest Middle	Middle School	5-8	155
430	South Brown County	Brown	6348 Horton Elem	Elementary	K-4/PK (w/IEP,PKAR (3 YO),PKAR (4 YO)	209
430	South Brown County	Brown	6350 Horton High	High School	9-12	159
431	Hoisington	Barton	6370 Lincoln Elementary	Elementary	K-5	207
431	Hoisington	Barton	6377 Roosevelt Elementary	Elementary	K-1,PK (w/IEP,PK,PKAR (3 YO),PKAR (4 YO)	167
431	Hoisington	Barton	6378 Hoisington Middle	Middle School	6-8	192
431	Hoisington	Barton	6380 Hoisington High	High School	9-12	225
432	Victoria	Ellis	6398 Victoria Elementary	Elementary	K-6/PK (w/IEP,PK,PKAR (4 YO)	175
432	Victoria	Ellis	6403 Victoria Junior-Senior High School	High School	7-12	115
434	Santa Fe Trail	Osage	6438 Santa Fe Trail Dist Osage Co	Central Office	N/A - Central Office	1
434	Santa Fe Trail	Osage	6440 Carbonide Attendance Center	Elementary	4-8	391
434	Santa Fe Trail	Osage	6444 Overbrook Attendance Center	High School	K-3/PK (w/IEP,PK,PKAR (3 YO),PKAR (4 YO)	299
434	Santa Fe Trail	Osage	6446 Santa Fe Trail High	High School	9-12.NG	299
435	Abilene	Dickinson	6462 Abilene Dist Dickinson Co	Central Office	N/A - Central Office	14
435	Abilene	Dickinson	6464 Dwight D. Eisenhower Elementary	Elementary	K-5/PK (w/IEP,PK,PKAR (4 YO)	202
435	Abilene	Dickinson	6466 Kennedy Elem	Elementary	K-1,PK (w/IEP,PK,PKAR (4 YO)	265
435	Abilene	Dickinson	6470 McKinley Elem	Elementary	2-3	225
435	Abilene	Dickinson	6472 Abilene Virtual School	High School	6-12.NG	18
435	Abilene	Dickinson	6476 Abilene Middle School	Middle School	6-8	355
435	Abilene	Dickinson	6476 Abilene High School	High School	9-12.NG	456
436	Caney Valley	Montgomery	6490 Lincoln Memorial Elem	Elementary	K-6/PK (w/IEP,PK,PKAR (4 YO)	444
436	Caney Valley	Montgomery	6491 Caney Valley Charter Academy	High School	9-12	444
436	Caney Valley	Montgomery	6492 Caney Valley High	High School	9-12.NG	244
437	Auburn Washburn	Shawnee	6510 Washburn Dist Shawnee Co	Central Office	N/A - Central Office	35
437	Auburn Washburn	Shawnee	6512 Auburn Elementary	Elementary	K-6/PK (w/IEP,PK,PKAR (4 YO)	385
437	Auburn Washburn	Shawnee	6513 Farley Elementary	Elementary	K-6/PK (w/IEP,PK,PKAR (3 YO),PKAR (4 YO)	608
437	Auburn Washburn	Shawnee	6517 Indian Hill Elementary	Elementary	K-5	496
437	Auburn Washburn	Shawnee	6518 Pauline Central Primary	Elementary	K-3,PK (w/IEP,PK,PKAR (3 YO),PKAR (4 YO)	401
437	Auburn Washburn	Shawnee	6522 Pauline South Intermediate	Elementary	4-6	296
437	Auburn Washburn	Shawnee	6522 Washburn Rural Middle School	Middle School	7-8	964
437	Auburn Washburn	Shawnee	6528 Wamaker Elem	Elementary	K-6/PK (w/IEP,PK,PKAR (3 YO),PKAR (4 YO)	548
437	Auburn Washburn	Shawnee	6530 Jay Shideler Elementary	Elementary	K-6	548
437	Auburn Washburn	Shawnee	6532 Washburn Rural High	High School	9-12.NG	1870
438	Skyline Schools	Pratt	6550 Skyline Elem	Elementary	K-8/PK (w/IEP,PK,PKAR (3 YO),PKAR (4 YO)	276
438	Skyline Schools	Pratt	6560 Skyline High	High School	9-12	113
439	Sedgewick Public Schools	Harvey	6572 R L Wright Elem	Elementary	K-6/PK (w/IEP,PK,PKAR (4 YO)	286
439	Sedgewick Public Schools	Harvey	6574 Sedgewick High	High School	7-12	220
440	Halstead	Harvey	6586 Bentley Primary School	Elementary	K-3/PK (w/IEP)	225
440	Halstead	Harvey	6592 Halstead Middle School	Middle School	4-8,PK (w/IEP,PK,PKAR (3 YO),PKAR (4 YO)	375
440	Halstead	Harvey	6594 Halstead High	High School	9-12	230
443	Dodge City	Ford	6674 Central Elem	Elementary	K-5	331
443	Dodge City	Ford	6676 Miller Elem	Elementary	K-5	795
443	Dodge City	Ford	6680 Northwest Elem	Elementary	K-5/PK (w/IEP,PK,DC,PKAR (3 YO),PKAR (4 YO)	389
443	Dodge City	Ford	6682 Sunnyside Elem	Elementary	K-5/PK (w/IEP,PK,PKAR (4 YO)	384
443	Dodge City	Ford	6684 Dodge City Middle School	Middle School	6-8	814
443	Dodge City	Ford	6688 Ross Elementary School	Elementary	K-5	507
443	Dodge City	Ford	6686 Dodge City High School	High School	9-12.NG	2045
443	Dodge City	Ford	6687 Beson Elementary	Elementary	K-5	372
443	Dodge City	Ford	6688 Linn Elementary	Elementary	K-5	372
443	Dodge City	Ford	6689 Soule Elementary School	Elementary	K-5	401
443	Dodge City	Ford	6707 Comanche Middle School	Middle School	6-8	778
444	Little River	Rice	6726 Little River Junior High	Junior High School	7-8	43
444	Little River	Rice	6728 Little River High	High School	9-12	94
444	Little River	Rice	6734 Windom Elem	Elementary	K-6/PK (w/IEP,PK,PKAR (3 YO),PKAR (4 YO)	154
445	Coffeyville	Montgomery	6752 Coffeyville Virtual Program	High School	6-12.NG	23
445	Coffeyville	Montgomery	6756 Community Elementary	Elementary	K-6/PK (w/IEP,PK,PKAR (4 YO)	1050
445	Coffeyville	Montgomery	6770 Roosevelt Middle	Middle School	7-8	244
445	Coffeyville	Montgomery	6772 Field Kindley High	High School	9-12.NG	511
446	Independence	Montgomery	6814 Independence Dist Montgomery Co	Central Office	N/A - Central Office	237
446	Independence	Montgomery	6821 Eisenhower Elem	Elementary	K-2,PK (w/IEP,PK,DC,PKAR (3 YO),PKAR (4 YO)	380
446	Independence	Montgomery	6825 Jefferson School	Elementary	3-5	380
446	Independence	Montgomery	6828 Independence Middle	Middle School	6-8	475
446	Independence	Montgomery	6830 Independence Sr High	High School	9-12.NG	555
446	Independence	Montgomery	6831 BRIDGES Academy	High School	7-12	29
447	Cherryvale	Montgomery	6865 Cherryvale Dist Montgomery Co	Central Office	N/A - Central Office	12
447	Cherryvale	Montgomery	6870 Lincoln Central Elem	Elementary	K-6/PK (w/IEP,PK,PKAR (3 YO),PKAR (4 YO)	111
447	Cherryvale	Montgomery	6871 Thayer Schools	Elementary	K-8,PK (w/IEP)	328
447	Cherryvale	Montgomery	6876 Cherryvale Sr / Middle School	High School	7-12.NG	296
448	Inman	McPherson	6898 Inman Dist McPherson Co	Central Office	N/A - Central Office	1
448	Inman	McPherson	6896 Inman Elem	Elementary	K-6/PK (w/IEP,PK,PKAR (3 YO),PKAR (4 YO)	236
448	Inman	McPherson	6898 Inman Jr/Sr High School	High School	7-12.NG	201
449	Easton	Leavenworth	6911 Easton Dist Leavenworth Co	Central Office	N/A - Central Office	1
449	Easton	Leavenworth	6917 Pleasant Ridge Middle	Middle School	6-8	134
449	Easton	Leavenworth	6918 Pleasant Ridge High	High School	9-12.NG	186
449	Easton	Leavenworth	6919 Pleasant Ridge Elementary	Elementary	K-5,PK (w/IEP,PK,PKAR (4 YO)	338

450	Shawnee Heights	Shawnee	6936 Shawnee Heights Dist Shawnee Co	Central Office	N/A - Central Office	1
450	Shawnee Heights	Shawnee	6938 Berryton Elem	Elementary	K-6,PK (w/IEP,PK,PKAR (3 YO),PKAR (4 YO)	500
450	Shawnee Heights	Shawnee	6940 Shawnee Heights Elem	Elementary	K-6,PK (w/IEP,PK,PKAR (3 YO),PKAR (4 YO)	451
450	Shawnee Heights	Shawnee	6944 Shawnee Heights High	High School	9-12,NG	1314
450	Shawnee Heights	Shawnee	6945 Shawnee Heights Middle	Middle School	7-8	578
450	Shawnee Heights	Shawnee	6946 Tecumseh North Elem	Elementary	K-6,PK (w/IEP,PK,PKAR (3 YO),PKAR (4 YO)	467
450	Shawnee Heights	Shawnee	6949 Tecumseh South Elem	Elementary	K-6,PK (w/IEP,PK,PKAR (3 YO),PKAR (4 YO)	507
452	Stanton County	Stanton	6982 Stanton County Elementary	Elementary	K-6,PK (w/IEP,PK,PKAR (3 YO),PKAR (4 YO)	241
452	Stanton County	Stanton	6984 Stanton County Jr./Sr. High School	High School	7-12,NG	190
453	Leavenworth	Leavenworth	6998 Leavenworth Dist Leavenworth C	Central Office	N/A - Central Office	20
453	Leavenworth	Leavenworth	7020 Leavenworth Sr High	High School	9-12,NG	1297
453	Leavenworth	Leavenworth	7026 Leavenworth Virtual School	Special School	K-8	85
453	Leavenworth	Leavenworth	7028 Henry Leavenworth	Elementary	1-4	328
453	Leavenworth	Leavenworth	7029 Anthony Elementary	Elementary	1-4	293
453	Leavenworth	Leavenworth	7031 David Brewer Elementary	Elementary	1-4	339
453	Leavenworth	Leavenworth	7033 Richard Warren Middle School	Middle School	7-8	476
453	Leavenworth	Leavenworth	7046 Richard Warren Intermediate School	Middle School	5-6	497
453	Leavenworth	Leavenworth	7047 Earl Lawson Early Education Center	High School	K-6,PK (w/IEP,PKAR (4 YO)	382
454	Burlingame Public School	Osage	7057 Burlingame Elementary	Elementary	K-5,PK (w/IEP,PK,PKAR (4 YO)	138
454	Burlingame Public School	Osage	7058 Burlingame Junior/Senior High	High School	6-12	144
456	Marais Des Cygnes Valley	Osage	7094 Marais Des Cygnes Valley Elem	Elementary	K-5,PK (w/IEP,PK,PKAR (4 YO)	92
456	Marais Des Cygnes Valley	Osage	7096 Marais Des Cygnes Valley High	High School	9-12,NG	71
456	Marais Des Cygnes Valley	Osage	7104 Marais Des Cygnes Valley Middle	Middle School	6-8	55
457	Garden City	Finney	7114 Garden City Dist Finney Co	Central Office	N/A - Central Office	69
457	Garden City	Finney	7115 Edith Scheuerman Elem	Elementary	K-4	180
457	Garden City	Finney	7116 Alta Brown Elem	Elementary	K-5	307
457	Garden City	Finney	7119 Florence Wilson Elem	Elementary	K-4	335
457	Garden City	Finney	7120 Abe Hubert Elementary School	Elementary	K-6	347
457	Garden City	Finney	7124 Buffalo Jones Elem	Elementary	K-4	250
457	Garden City	Finney	7126 Georgia Matthews Elem	Elementary	6-8	107
457	Garden City	Finney	7128 Horace J. Good Middle School	Middle School	7-8	657
457	Garden City	Finney	7130 Garden City High School	High School	9-12	1984
457	Garden City	Finney	7131 Gertrude Walker Elem	Elementary	K-4	199
457	Garden City	Finney	7132 Jennie Barker Elem	Elementary	K-4	160
457	Garden City	Finney	7133 Jennie Wilson Elem	Elementary	K-4,PK (w/IEP,PK,PKAR (3 YO),PKAR (4 YO)	715
457	Garden City	Finney	7138 Kenneth Henderson Middle	Middle School	7-8	393
457	Garden City	Finney	7140 Pymmi Elementary	Elementary	K-6	144
457	Garden City	Finney	7143 Victor Orslew Elem	Elementary	6-8	420
457	Garden City	Finney	7147 Bernadine Stitts Intermediate Ctr	Middle School	5-6	448
457	Garden City	Finney	7148 Charles O Stones Intermediate Ctr	Middle School	5-8	397
457	Garden City	Finney	7177 GC Achieve at J.D. Adams Hall	Other	K-12	101
457	Garden City	Finney	7189 USD 457 Virtual Academy	High School	9-12,NG	118
458	Basehor-Linwood	Leavenworth	7158 Basehor Dist Leavenworth Co	Central Office	N/A - Central Office	6
458	Basehor-Linwood	Leavenworth	7160 Basehor Elementary School	Elementary	K-5,PK (w/IEP,PK,PKAR (3 YO),PKAR (4 YO)	492
458	Basehor-Linwood	Leavenworth	7164 Basehor-Linwood High School	High School	9-12	621
458	Basehor-Linwood	Leavenworth	7170 Linwood Elementary School	Elementary	K-5,PK (w/IEP,PK,PKAR (4 YO)	144
458	Basehor-Linwood	Leavenworth	7172 Basehor-Linwood Middle School	Middle School	6-8	622
458	Basehor-Linwood	Leavenworth	7176 Glenwood Ridge Elementary School	Elementary	K-5,PK (w/IEP,PK,PKAR (3 YO)	435
458	Basehor-Linwood	Leavenworth	7181 Gray Hawk Elementary School	Elementary	K-5,PK (w/IEP,PK,PKAR (3 YO)	258
458	Basehor-Linwood	Leavenworth	7188 Basehor-Linwood Virtual School	Other	K-12,NG	228
459	Bucklin	Ford	7184 Bucklin Elem	Elementary	K-8,PK (w/IEP,PK,PKAR (4 YO)	163
459	Bucklin	Ford	7186 Bucklin High	High School	9-12	73
460	Hesston	Harvey	7206 Hesston Elem	Elementary	K-6,PK (w/IEP)	304
460	Hesston	Harvey	7208 Hesston Middle	Middle School	5-8	286
460	Hesston	Harvey	7210 Hesston High	High School	9-12	260
461	Neodesha	Wilson	7222 Neodesha Dist Wilson Co	Central Office	K-3,PK (w/IEP,NG,PK,PKAR (4 YO)	2
461	Neodesha	Wilson	7223 Heller Elem	Elementary	K-6,PK (w/IEP,PK,PKAR (3 YO),PKAR (4 YO)	271
461	Neodesha	Wilson	7228 North Lawn Elem	Elementary	K-6	173
461	Neodesha	Wilson	7232 Neodesha High	High School	7-12	329
462	Central	Cowley	7246 Central Elem	Elementary	K-6,PK (w/IEP,PK,PKAR (3 YO),PKAR (4 YO)	163
462	Central	Cowley	7254 Central Jr./Sr High	High School	9-12	145
463	Udall	Cowley	7270 Udall Elem	Elementary	K-5,PK (w/IEP,PK,PKAR (3 YO),PKAR (4 YO)	157
463	Udall	Cowley	7271 Udall Middle School	Middle School	6-8	84
463	Udall	Cowley	7272 Udall High	High School	9-12	102
464	Tonganoxie	Leavenworth	7282 Tonganoxie Dist Leavenworth Co	Central Office	2 - Central Office	2
464	Tonganoxie	Leavenworth	7298 Tonganoxie High	High School	9-12	600
464	Tonganoxie	Leavenworth	7299 Tonganoxie Middle School	Middle School	6-8	464
464	Tonganoxie	Leavenworth	7300 Tonganoxie Elem	Elementary	K-5,PK (w/IEP,PK,PKAR (4 YO)	838
465	Winfield	Cowley	7306 Winfield District Cowley Co	Central Office	N/A - Central Office	127
465	Winfield	Cowley	7310 Country View Elem	Elementary	K-5,PK (w/IEP,PK,DC,PKAR (4 YO)	143
465	Winfield	Cowley	7324 Irving Elem	Elementary	K-5,DC	276
465	Winfield	Cowley	7326 Lowell Elem	Elementary	K-5	254
465	Winfield	Cowley	7330 Whittier Elem	Elementary	K-5	255
465	Winfield	Cowley	7332 Winfield High	High School	9-12	661
465	Winfield	Cowley	7333 Winfield Middle School	Middle School	6-8	498
466	Scott County	Scott	7352 Scott City Lower Elem	Elementary	K-5,PK (w/IEP,PKAR (3 YO),PKAR (4 YO)	232
466	Scott County	Scott	7358 Scott City Middle	Middle School	3-8	426
466	Scott County	Scott	7359 Scott Community Learning Center	High School	8-12,NG	12
466	Scott County	Scott	7360 Scott City High	High School	9-12	302
467	Leoti	Wichita	7382 Wichita County Elementary	Elementary	K-5,PK (w/IEP,PK,PKAR (4 YO)	213
467	Leoti	Wichita	7385 Wichita County Junior-Senior High School	High School	7-12	172
468	Healy Public Schools	Lane	7402 Healy Elem	Elementary	K-5,PK (w/IEP),PK	21
468	Healy Public Schools	Lane	7404 Healy High	High School	6-12	22
469	Lansing	Leavenworth	7411 Lansing Dist Leavenworth Co	Central Office	N/A - Central Office	14
469	Lansing	Leavenworth	7420 Lansing Middle 6-8	Middle School	6-8	620
469	Lansing	Leavenworth	7423 Lansing Elementary School	Elementary	K-3,PK (w/IEP,PKAR (4 YO)	714
469	Lansing	Leavenworth	7424 Lansing High 9-12	High School	9-12,NG	883
469	Lansing	Leavenworth	7435 Lansing Intermediate School	Elementary	6-8	376
470	Arkansas City	Cowley	7440 Adams Elem	Elementary	K-5,PK (w/IEP,PK,PKAR (3 YO),PKAR (4 YO)	297
470	Arkansas City	Cowley	7442 Frances Willard Elem	Elementary	K-5,PK (w/IEP,PK,PKAR (3 YO),PKAR (4 YO)	243
470	Arkansas City	Cowley	7443 Jefferson Elem	Elementary	K-5,PK (w/IEP,PK,PKAR (3 YO),PKAR (4 YO)	253
470	Arkansas City	Cowley	7446 Roosevelt Elem	Elementary	K-5,PK (w/IEP,PK,PKAR (3 YO),PKAR (4 YO)	211
470	Arkansas City	Cowley	7454 Arkansas City Middle Sch	Middle School	6-8	673
470	Arkansas City	Cowley	7456 Arkansas City High	High School	9-12	816
470	Arkansas City	Cowley	7459 C 4 Elem	Elementary	K-5,PK (w/IEP,PK,PKAR (4 YO)	104
470	Arkansas City	Cowley	7466 I X L Elem	Elementary	K-5,PK (w/IEP,PK,PKAR (3 YO),PKAR (4 YO)	187
471	Dexter	Cowley	7492 Dexter Elem	Elementary	K-5,PK (w/IEP),PK	136
471	Dexter	Cowley	7494 Dexter High	High School	6-12	147
473	Chapman	Dickinson	7534 Blue Ridge Elem	Elementary	K-5,PK (w/IEP),PK	67
473	Chapman	Dickinson	7540 Chapman Elem	Elementary	K-5,PK (w/IEP),PK	301
473	Chapman	Dickinson	7541 Chapman Middle School	Middle School	6-8	288
473	Chapman	Dickinson	7542 Chapman High	High School	9-12,NG	348
473	Chapman	Dickinson	7545 Enterprise Elem	Elementary	K-5,PK (w/IEP),PK	79
473	Chapman	Dickinson	7552 Rural Center Elem	Elementary	K-5,PK (w/IEP),PK	60
474	Haviland	Kiowa	7570 Haviland Dist Kiowa Co	Central Office	N/A - Central Office	26
474	Haviland	Kiowa	7574 Haviland Elem	Elementary	K-8,PK (w/IEP,PKAR (4 YO)	58
475	Geary County Schools	Geary	7588 Geary County Dist Geary Co	Central Office	N/A - Central Office	23
475	Geary County Schools	Geary	7592 Grandview Elem	Elementary	K-5,PK (w/IEP,PK,PKAR (3 YO),PKAR (4 YO)	105
475	Geary County Schools	Geary	7593 Spring Valley Elementary	Elementary	K-5,PK (w/IEP,PK,PKAR (3 YO),PKAR (4 YO)	416
475	Geary County Schools	Geary	7598 Eisenhower Elem	Elementary	K-5,PK (w/IEP,PK,PKAR (3 YO),PKAR (4 YO)	352
475	Geary County Schools	Geary	7600 Fort Riley Elem	Elementary	K-5,PK (w/IEP,PK,PKAR (3 YO),PKAR (4 YO)	389
475	Geary County Schools	Geary	7601 LTG Richard J. Seitz Elementary	Elementary	K-5,PK (w/IEP,PK,PKAR (3 YO),PKAR (4 YO)	657
475	Geary County Schools	Geary	7606 Lincoln Elem	Elementary	K-5,PK (w/IEP,PK,PKAR (3 YO),PKAR (4 YO)	271
475	Geary County Schools	Geary	7608 Morris Hill Elem	Elementary	K-5,PK (w/IEP,PK,PKAR (3 YO),PKAR (4 YO)	244
475	Geary County Schools	Geary	7610 Sheridan Elem	Elementary	K-5,PK (w/IEP,PK,PKAR (3 YO),PKAR (4 YO)	270
475	Geary County Schools	Geary	7612 Washington Elem	Elementary	K-5,PK (w/IEP,PK,PKAR (3 YO),PKAR (4 YO)	328
475	Geary County Schools	Geary	7614 Westwood Elem	Elementary	K-5,PK (w/IEP,PK,PKAR (3 YO),PKAR (4 YO)	281
475	Geary County Schools	Geary	7616 Fort Riley Middle School	Middle School	6-8	500
475	Geary County Schools	Geary	7618 Junction City Middle School	Middle School	6-8	952
475	Geary County Schools	Geary	7620 Junction City Sr High	High School	9-12	1598
475	Geary County Schools	Geary	7624 Milford Elem	Elementary	K-5,PK (w/IEP,PK,PKAR (3 YO),PKAR (4 YO)	84
475	Geary County Schools	Geary	7630 Ware Elem	Elementary	K-5,PK (w/IEP,PK,PKAR (3 YO),PKAR (4 YO)	625
476	Copeland	Grav	7644 Copeland Dist Grav Co	Central Office	N/A - Central Office	28
476	Copeland	Grav	7648 Copeland Elem	Elementary	K-5,PK,PKAR (4 YO)	45
477	Ingalis	Grav	7651 South Gray Jr High	Junior High School	6-8	27
477	Ingalis	Grav	7664 Ingalis Elem	Elementary	K-5,PK (w/IEP,PK,PKAR (4 YO)	112
477	Ingalis	Grav	7666 Ingalis High School/Junior High	High School	6-12	121
479	Crest	Anderson	7692 Crest Elementary	Elementary	K-8,PK (w/IEP,PK,DC,PKAR (4 YO)	184
479	Crest	Anderson	7694 Crest High	High School	9-12,NG	79
480	Liberal	Seward	7715 Cottowood Elementary School	Elementary	K-5	495
480	Liberal	Seward	7718 MacArthur Elementary School	Elementary	K-5	368
480	Liberal	Seward	7725 Sunflower Elementary School	Elementary	K-5,PK (w/IEP,PK,PKAR (3 YO),PKAR (4 YO)	561
480	Liberal	Seward	7732 Liberal Sr High	High School	9-12	1349
480	Liberal	Seward	7738 Eisenhower Middle School	Middle School	6-8	587
480	Liberal	Seward	7737 Prairie View Elementary School	Elementary	K-5	411
480	Liberal	Seward	7738 Meadowlark Elementary School	Elementary	K-5	350
480	Liberal	Seward	7739 Seymour Rogers Middle School	Middle School	6-8	547
481	Rural Vista	Dickinson	7752 Hope Elem	Elementary	K-8,PK,PKAR (4 YO)	74
481	Rural Vista	Dickinson	7752 Hope High	High School	9-12,NG	30
481	Rural Vista	Dickinson	7758 White City Elem	Elementary	K-8,PK (w/IEP,PK,PKAR (4 YO)	127
481	Rural Vista	Dickinson	7760 White City High	High School	9-12,NG	40
482	Dighton	Lane	7772 Dighton Elem	Elementary	K-6,PK (w/IEP),PK	158
482	Dighton	Lane	7782 Dighton High	High School	7-12	100
483	Kismet-Plains	Seward	7798 Kismet Elem	Elementary	K-2,PK (w/IEP,PK,PKAR (4 YO)	153
483	Kismet-Plains	Seward	7800 Plains Elem	Elementary	K-5	123
483	Kismet-Plains	Seward	7804 Southwestern Heights Jr/Sr High	High School	6-12	327
484	Fredonia	Wilson	7814 Fredonia Dist Wilson Co	Central Office	N/A - Central Office	1
484	Fredonia	Wilson	7821 Fredonia Early Learning Center	Elementary	K,PK (w/IEP,PK,PKAR (4 YO)	83
484	Fredonia	Wilson	7833 Lincoln Elementary	Elementary	K-5	304
484	Fredonia	Wilson	7838 Fredonia Jr./Sr. High School	High School	7-12	277
487	Herrington	Dickinson	7886 Herrington Dist Dickinson Co	Central Office	N/A - Central Office	0
487	Herrington	Dickinson	7888 Herrington Elem	Elementary	K-5,PK (w/IEP,PK,PKAR (3 YO),PKAR (4 YO)	178
487	Herrington	Dickinson	7890 Herrington Middle Sch	Middle School	6-8	115
487	Herrington	Dickinson	7892 Herrington High	High School	9-12,NG	142
489	Hays	Ellis	7934 Hays Dist Ellis Co	Central Office	N/A - Central Office	100

489	Hays	Ellis	7945 Learning Center	High School	9-12.NG	60
489	Hays	Ellis	7946 Lincoln Elem	Elementary	K-5,PK (w/IEP)	314
489	Hays	Ellis	7950 Woodrow Wilson Elem	Elementary	6-8	388
489	Hays	Ellis	7952 Hays Middle School	Middle School	6-8	741
489	Hays	Ellis	7954 Hays High	High School	9-12	891
489	Hays	Ellis	7956 Kathryn O'Loughlin McCarthy Elem	Elementary	K-5	394
489	Hays	Ellis	7959 Roosevelt Elem	Elementary	K-5	390
490	El Dorado	Butler	7986 El Dorado Dist Butler Co	Central Office	N/A - Central Office	32
490	El Dorado	Butler	7990 Grandview Elem	Elementary	K-5,PK (w/IEP),PK,PKAR (4 YO)	257
490	El Dorado	Butler	8000 El Dorado Middle	Middle School	6-8	444
490	El Dorado	Butler	8002 El Dorado High	High School	9-12	482
490	El Dorado	Butler	8009 Skelly Elementary School	Elementary	K-5,PK (w/IEP),PK,PKAR (4 YO)	248
490	El Dorado	Butler	8011 Blackmore Elementary	Elementary	K-5,PK (w/IEP),PK,PKAR (4 YO)	336
490	El Dorado	Butler	8012 El Dorado Virtual School	Other	K-12	33
491	Eudora	Douglas	8020 Eudora Dist Douglas Co	Central Office	N/A - Central Office	4
491	Eudora	Douglas	8022 Eudora Elementary School	Elementary	K-5,PK (w/IEP),PK,PKAR (3 YO),PKAR (4 YO)	750
491	Eudora	Douglas	8023 Eudora High School	High School	9-12	536
491	Eudora	Douglas	8029 Eudora Middle School	Middle School	6-8	411
491	Eudora	Douglas	8033 Eudora Schools Virtual Learning	High School	9-12.NG	20
492	Flinthills	Butler	8038 Flinthills Primary School	Elementary	K-2,PK (w/IEP),PK,PKAR (4 YO)	62
492	Flinthills	Butler	8046 Flinthills Intermediate School	Elementary	3-5	109
492	Flinthills	Butler	8050 Flinthills Middle School	Middle School	6-8	64
492	Flinthills	Butler	8051 Flinthills High School	High School	9-12	55
493	Columbus	Cherokee	8064 Highland Elem	Elementary	2-3	120
493	Columbus	Cherokee	8066 Park Elem	Elementary	K-1,PK (w/IEP),PK,PKAR (4 YO)	184
493	Columbus	Cherokee	8069 Central Elem	Elementary	4-8	353
493	Columbus	Cherokee	8070 Columbus High	High School	9-12.NG	267
494	Syracuse	Hamilton	8110 Syracuse Elem	Elementary	K-6,PK (w/IEP),PK,PKAR (4 YO)	330
494	Syracuse	Hamilton	8114 Syracuse High	High School	7-12	226
495	Fl Larned	Pawnee	8133 Fort Larned Elementary School	Elementary	K-5,PK (w/IEP),PK,PKAR (3 YO),PKAR (4 YO)	443
495	Fl Larned	Pawnee	8140 Larned Middle School	Middle School	6-8	198
495	Fl Larned	Pawnee	8142 Larned Sr High	High School	9-12	226
496	Pawnee Heights	Pawnee	8162 Pawnee Heights Dist Pawnee Co	Central Office	N/A - Central Office	6
496	Pawnee Heights	Pawnee	8167 Pawnee Heights	High School	K-5,PK (w/IEP),NG,PK,PKAR (4 YO)	141
497	Lawrence	Douglas	8184 Lawrence Dist Douglas Co	Central Office	N/A - Central Office	61
497	Lawrence	Douglas	8185 Lawrence Virtual School	Elementary	K-12.NG	970
497	Lawrence	Douglas	8189 Sunflower Elementary	Elementary	K-5	458
497	Lawrence	Douglas	8190 Prairie Park Elem	Elementary	K-5	380
497	Lawrence	Douglas	8191 Broken Arrow Elem	Elementary	K-5	259
497	Lawrence	Douglas	8194 Cordley Elem	Elementary	K-5	279
497	Lawrence	Douglas	8196 Deerfield Elem	Elementary	K-5	467
497	Lawrence	Douglas	8198 Hillcrest Elem	Elementary	4-8	338
497	Lawrence	Douglas	8202 Quail Run Elementary	Elementary	K-5	398
497	Lawrence	Douglas	8204 New York Elem	Elementary	K-5,PK (w/IEP),PK,PKAR (3 YO),PKAR (4 YO)	376
497	Lawrence	Douglas	8206 Grinckney Elem	Elementary	K-5	197
497	Lawrence	Douglas	8208 Schwesler Elem	Elementary	K-5	255
497	Lawrence	Douglas	8210 Sunset Hill Elem	Elementary	K-5	377
497	Lawrence	Douglas	8212 Woodlawn Elem	Elementary	K-5	206
497	Lawrence	Douglas	8213 Langston Hughes Elem	Elementary	K-5	439
497	Lawrence	Douglas	8214 Lawrence Liberty Memorial Central Mid School	Middle School	6-8	486
497	Lawrence	Douglas	8215 Billy Mills Middle School	Middle School	6-8	546
497	Lawrence	Douglas	8216 Lawrence West Middle School	Middle School	6-8	610
497	Lawrence	Douglas	8217 Lawrence Southwest Middle School	Middle School	6-8	622
497	Lawrence	Douglas	8218 Lawrence High	High School	9-12	1589
497	Lawrence	Douglas	8224 Lawrence Free State High	High School	9-12	1841
498	Valley Heights	Marshall	8236 Waterloo Dist Marshall Co	Central Office	N/A - Central Office	117
498	Valley Heights	Marshall	8238 Valley Heights Elem	Elementary	K-2,PK (w/IEP),PK,PKAR (3 YO),PKAR (4 YO)	132
498	Valley Heights	Marshall	8246 Valley Heights Elementary - Waterville	High School	7-12	191
499	Galena	Cherokee	8262 Galena Dist Cherokee Co	Central Office	N/A - Central Office	3
499	Galena	Cherokee	8264 Liberty Elem	Elementary	K-5	175
499	Galena	Cherokee	8268 Spring Grove Primary Center	Elementary	K-2,PK (w/IEP),PK,PKAR (3 YO),PKAR (4 YO)	219
499	Galena	Cherokee	8270 Galena Middle School	Middle School	6-8	189
499	Galena	Cherokee	8274 Galena High	High School	9-12.NG	257
500	Kansas City	Wandotte	8276 Kansas City Dist Wandotte Co	Central Office	N/A - Central Office	863
500	Kansas City	Wandotte	8279 Bancker Elem	Elementary	K-5,PK,PKAR (4 YO)	308
500	Kansas City	Wandotte	8281 McKinley Elementary School	Elementary	K-5	280
500	Kansas City	Wandotte	8282 Silver City Elem	Elementary	K-1,PK (w/IEP),PK,PKAR (3 YO),PKAR (4 YO)	284
500	Kansas City	Wandotte	8284 Chelsea Elem	Elementary	K-5	571
500	Kansas City	Wandotte	8285 Douglass Elem	Elementary	K-5	258
500	Kansas City	Wandotte	8287 Thomas A Edison Elem	Elementary	K-5,PK (w/IEP),PK,PKAR (3 YO),PKAR (4 YO)	247
500	Kansas City	Wandotte	8288 Emerson Elem	Elementary	K-5	163
500	Kansas City	Wandotte	8290 John Fiske Elem	Elementary	K-5,PK (w/IEP),PK,PKAR (3 YO),PKAR (4 YO)	296
500	Kansas City	Wandotte	8292 Grant Elem	Elementary	K-5	305
500	Kansas City	Wandotte	8299 Bertram Cautheus Elem	Elementary	K-5,PK (w/IEP),PK,PKAR (3 YO),PKAR (4 YO)	383
500	Kansas City	Wandotte	8298 Mark Twain Elem	Elementary	K-5	246
500	Kansas City	Wandotte	8303 Noble Prentiss Elem	Elementary	K-5	235
500	Kansas City	Wandotte	8305 Quindaro Elem	Elementary	K-5	333
500	Kansas City	Wandotte	8306 Frank Rushton Elem	Elementary	K-5,PK (w/IEP),PK,PKAR (3 YO),PKAR (4 YO)	331
500	Kansas City	Wandotte	8309 New Stanley Elem	Elementary	K-5	239
500	Kansas City	Wandotte	8311 Eugene Ware Elem	Elementary	K-5	239
500	Kansas City	Wandotte	8313 Whittier Elem	Elementary	K-5	513
500	Kansas City	Wandotte	8316 Frances Willard Elem	Elementary	K-5	400
500	Kansas City	Wandotte	8318 Central Middle	Middle School	6-8	720
500	Kansas City	Wandotte	8317 Carl B. Bruce Middle School	Middle School	6-8	942
500	Kansas City	Wandotte	8320 Argentine Middle	Middle School	6-8	675
500	Kansas City	Wandotte	8322 Rosedale Middle	Middle School	6-8	529
500	Kansas City	Wandotte	8322 Summer Academy of Arts & Science	High School	9-12	999
500	Kansas City	Wandotte	8323 Wandotte High	High School	9-12.NG	1833
500	Kansas City	Wandotte	8324 Arrowhead Middle	Middle School	6-8	455
500	Kansas City	Wandotte	8327 J C Harmon High	High School	9-12.NG	1229
500	Kansas City	Wandotte	8328 F I Schiagh High	High School	9-12.NG	797
500	Kansas City	Wandotte	8330 Claude A Huyck Elem	Elementary	K-5	289
500	Kansas City	Wandotte	8331 D D Eisenhower Middle	Middle School	6-8	635
500	Kansas City	Wandotte	8332 Lind Grove Elem	Elementary	K-5	534
500	Kansas City	Wandotte	8340 John F Kennedy Elem	Elementary	K-5	439
500	Kansas City	Wandotte	8342 Lindbergh Elem	Elementary	K-5	196
500	Kansas City	Wandotte	8346 Stony Point South	Elementary	K-5	271
500	Kansas City	Wandotte	8348 Stony Point North	Elementary	K-5	304
500	Kansas City	Wandotte	8350 Washington High	High School	9-12.NG	1122
500	Kansas City	Wandotte	8352 Welborn Elem	Elementary	K-5	552
500	Kansas City	Wandotte	8356 M E Pearson Elem	Elementary	K-5,PK (w/IEP),PK,PKAR (3 YO),PKAR (4 YO)	601
500	Kansas City	Wandotte	8402 Fairfax Learning Center	High School	9-12.NG	62
500	Kansas City	Wandotte	8403 500 Reach	High School	9-12.NG	112
500	Kansas City	Wandotte	8406 Bridges/Wyandotte Academy	Special School	1-12.NG	12
500	Kansas City	Wandotte	8407 Gloria Willis Middle School	Middle School	6-8	764
500	Kansas City	Wandotte	8408 Lowell Bruner Elementary School	Elementary	K-5	427
500	Kansas City	Wandotte	8409 West Park Elementary School	Elementary	K-5	512
501	Topeka Public Schools	Shawnee	8440 Topeka Dist Shawnee Co	Central Office	N/A - Central Office	246
501	Topeka Public Schools	Shawnee	8446 Avondale Elementary	Elementary	K-12.NG	368
501	Topeka Public Schools	Shawnee	8452 Chase Middle School	Middle School	K-5,PK (w/IEP),PK,PKAR (3 YO),PKAR (4 YO)	366
501	Topeka Public Schools	Shawnee	8453 Jardine Elementary	Elementary	K-5,PK (w/IEP),PK,PKAR (3 YO),PKAR (4 YO)	675
501	Topeka Public Schools	Shawnee	8462 Highland Park Central	Elementary	K-5	326
501	Topeka Public Schools	Shawnee	8465 Ross Elementary	Elementary	K-5,PK (w/IEP),PK,PKAR (3 YO),PKAR (4 YO)	521
501	Topeka Public Schools	Shawnee	8467 Hope Street Charter Academy	High School	9-12	86
501	Topeka Public Schools	Shawnee	8472 Lowman Hill Elem	Elementary	K-5,PK (w/IEP),PK,PKAR (4 YO)	287
501	Topeka Public Schools	Shawnee	8480 McCarter Elem	Elementary	K-5,PK (w/IEP),PK,PKAR (4 YO)	365
501	Topeka Public Schools	Shawnee	8482 McClure Elem	Elementary	K-5,PK (w/IEP),PK,PKAR (4 YO)	319
501	Topeka Public Schools	Shawnee	8484 McEachron Elem	Elementary	K-5,PK (w/IEP),PK,PKAR (4 YO)	375
501	Topeka Public Schools	Shawnee	8486 Meadows Elementary	Elementary	K-5,PK (w/IEP),PK,PKAR (3 YO),PKAR (4 YO)	393
501	Topeka Public Schools	Shawnee	8494 Quinoy Elem	Elementary	K-5,PK (w/IEP),PK,PKAR (4 YO)	180
501	Topeka Public Schools	Shawnee	8498 Randolph Elem	Elementary	K-5,PK (w/IEP),PK,PKAR (3 YO),PKAR (4 YO)	342
501	Topeka Public Schools	Shawnee	8499 Scott Dual Language Magnet	Elementary	K-5,PK (w/IEP),PK,PKAR (4 YO)	412
501	Topeka Public Schools	Shawnee	8501 Robinson Middle School	Middle School	6-8	366
501	Topeka Public Schools	Shawnee	8504 State Street Elem	Elementary	K-5,PK (w/IEP),PK,PKAR (4 YO)	449
501	Topeka Public Schools	Shawnee	8505 Stout Elem	Elementary	K-5,PK (w/IEP),PK,PKAR (4 YO)	153
501	Topeka Public Schools	Shawnee	8512 Whitson Elem	Elementary	K-5,PK (w/IEP),PK,PKAR (3 YO),PKAR (4 YO)	392
501	Topeka Public Schools	Shawnee	8513 Williams Science and Fine Arts Magnet School	Elementary	K-5,PK (w/IEP),PK,PKAR (3 YO),PKAR (4 YO)	428
501	Topeka Public Schools	Shawnee	8524 Eisenhower Middle School	Middle School	6-8	466
501	Topeka Public Schools	Shawnee	8530 Jardine Middle School	Middle School	6-8	531
501	Topeka Public Schools	Shawnee	8532 Landon Middle School	Middle School	6-8	451
501	Topeka Public Schools	Shawnee	8533 Marjorie French Middle School	Middle School	6-8	446
501	Topeka Public Schools	Shawnee	8536 Highland Park High	High School	9-12	853
501	Topeka Public Schools	Shawnee	8538 Topeka High	High School	9-12	1505
501	Topeka Public Schools	Shawnee	8540 Topeka West High	High School	9-12	1125
501	Topeka Public Schools	Shawnee	8552 Capital City	Special School	7-12.NG	75
502	Lewis	Edwards	8579 Lewis Dist Edwards Co	Central Office	N/A - Central Office	46
502	Lewis	Edwards	8580 Lewis Elem	Elementary	K-5,PK (w/IEP),PK,PKAR (3 YO),PKAR (4 YO)	85
503	Parsons	Labette	8584 Parsons Dist Labette Co	Central Office	N/A - Central Office	5
503	Parsons	Labette	8594 Parsons Middle School	Middle School	6-8	296
503	Parsons	Labette	8596 Parsons Sr High	High School	9-12	391
503	Parsons	Labette	8602 Garfield School	Elementary	4-8	196
503	Parsons	Labette	8603 Guthridge School	Elementary	4-5	170
503	Parsons	Labette	8604 Lincoln School	Elementary	K-1,PK (w/IEP),PK,PKAR (3 YO),PKAR (4 YO)	262
504	Oswego	Labette	8620 Oswego Noesho Hets Elem	Elementary	K-5,PK (w/IEP),PK,PKAR (4 YO)	166
504	Oswego	Labette	8623 Service Valley Charter Academy	Elementary	K-8	104
504	Oswego	Labette	8624 Oswego Junior-Senior High School	High School	6-12	162
505	Chetopa-St. Paul	Labette	8370 St. Paul Elementary School	Elementary	K-5,PK (w/IEP),PK,PKAR (4 YO)	78
505	Chetopa-St. Paul	Labette	8372 St. Paul High School	High School	9-12	126
505	Chetopa-St. Paul	Labette	8373 St. Paul Middle School	Middle School	6-8	39
505	Chetopa-St. Paul	Labette	8636 Chetopa Elem	Elementary	K-5,PK (w/IEP),PK,PKAR (4 YO)	71
505	Chetopa-St. Paul	Labette	8638 Chetopa High	High School	6-12.NG	74
506	Labette County	Labette	8650 Labette Co Dist Labette Co	Central Office	N/A - Central Office	1
506	Labette County	Labette	8652 Altamont Elem	Elementary	K-8,PK (w/IEP),PK,PKAR (3 YO),PKAR (4 YO)	234
506	Labette County	Labette	8654 Labette County High School	High School	9-12.NG	525

506	Labette County	Labette	8658 Bartlett Elem	Elementary	K-8	125
506	Labette County	Labette	8666 Edna Elem	Elementary	K-8,PK (w/IEP),PK,PKAR (3 YO),PKAR (4 YO)	188
506	Labette County	Labette	8680 Meadowview Elem	Elementary	K-8,PK (w/IEP),PK,PKAR (3 YO),PKAR (4 YO)	361
506	Labette County	Labette	8684 Mound Valley Elem	Elementary	K-8,PK (w/IEP),PK,PKAR (3 YO),PKAR (4 YO)	153
507	Satanta	Haskell	8694 Satanta Elem	Elementary	K-5,PK (w/IEP),PK,PKAR (4 YO)	120
507	Satanta	Haskell	8696 Satanta Jr-Sr High	High School	6-12	139
508	Baxter Springs	Cherokee	8700 Baxter Springs Dist Cherokee Co	Central Office	N/A - Central Office	1
508	Baxter Springs	Cherokee	8702 Central Elem	Elementary	3-6	212
508	Baxter Springs	Cherokee	8704 Lincoln Elem	Elementary	K-2,PK (w/IEP),PK,PKAR (4 YO)	224
508	Baxter Springs	Cherokee	8707 USD 508 eAcademy	High School	6-12,NG	50
508	Baxter Springs	Cherokee	8710 Baxter Springs High	High School	7-12,NG	396
509	South Haven	Sumner	8742 South Haven Elem	Elementary	K-5,PK (w/IEP),PK,PKAR (3 YO),PKAR (4 YO)	105
509	South Haven	Sumner	8744 South Haven High	High School	6-12	107
511	Attica	Harper	8762 Puls Elem	Elementary	K-8,PK (w/IEP),PK,PKAR (3 YO),PKAR (4 YO)	119
511	Attica	Harper	8764 Attica High	High School	9-12	53
512	Shawnee Mission Pub Sch	Johnson	8770 Shawnee Mission Dist Johnson Co	Central Office	N/A - Central Office	184
512	Shawnee Mission Pub Sch	Johnson	8774 East Antioch Elem	Elementary	K-6,PK (w/IEP),PK	311
512	Shawnee Mission Pub Sch	Johnson	8776 Apache Elem	Elementary	K-6,PK (w/IEP),PK,PKAR (4 YO)	508
512	Shawnee Mission Pub Sch	Johnson	8782 Bellinder Elem	Elementary	K-6,PK (w/IEP),PK	431
512	Shawnee Mission Pub Sch	Johnson	8784 Bluejacket-Flint	Elementary	K-6,PK (w/IEP),PK,PKAR (4 YO)	387
512	Shawnee Mission Pub Sch	Johnson	8786 Briarwood Elem	Elementary	K-6,PK (w/IEP),PK,PKAR (4 YO)	644
512	Shawnee Mission Pub Sch	Johnson	8787 Broken Arrow Elem	Elementary	K-6,PK (w/IEP),PK,PKAR (4 YO)	341
512	Shawnee Mission Pub Sch	Johnson	8788 Brookridge Elem	Elementary	K-6,PK (w/IEP),PK,PKAR (4 YO)	526
512	Shawnee Mission Pub Sch	Johnson	8790 Brookwood Elem	Elementary	K-6,PK (w/IEP),PK,PKAR (4 YO)	449
512	Shawnee Mission Pub Sch	Johnson	8791 Christa McAuliffe Elem	Elementary	K-6,PK (w/IEP),PK	419
512	Shawnee Mission Pub Sch	Johnson	8793 Comanche Elem	Elementary	K-6,PK (w/IEP),PK,PKAR (4 YO)	405
512	Shawnee Mission Pub Sch	Johnson	8794 Corinth Elem	Elementary	K-6,PK (w/IEP),PK	561
512	Shawnee Mission Pub Sch	Johnson	8796 Crestview Elem	Elementary	K-6,PK (w/IEP),PK,PKAR (4 YO)	396
512	Shawnee Mission Pub Sch	Johnson	8800 Lenexa Hills Elementary	Elementary	K-6,PK (w/IEP),PK,PKAR (4 YO)	314
512	Shawnee Mission Pub Sch	Johnson	8806 Highlands Elem	Elementary	K-6,PK (w/IEP),PK,PKAR (4 YO)	370
512	Shawnee Mission Pub Sch	Johnson	8808 John Diemer Elem	Elementary	K-6,PK (w/IEP),PK	387
512	Shawnee Mission Pub Sch	Johnson	8809 Project Finish	Special School	NG	24
512	Shawnee Mission Pub Sch	Johnson	8812 Shawnee Elem	Elementary	K-6,PK (w/IEP),PK,PKAR (4 YO)	492
512	Shawnee Mission Pub Sch	Johnson	8815 Merriam Park Elementary	Elementary	K-6,PK (w/IEP),PK,PKAR (4 YO)	432
512	Shawnee Mission Pub Sch	Johnson	8816 Ray Marsh Elem	Elementary	K-6,PK (w/IEP),PK	471
512	Shawnee Mission Pub Sch	Johnson	8819 Mill Creek Elem	Elementary	K-6,PK (w/IEP),PK	484
512	Shawnee Mission Pub Sch	Johnson	8822 Nieman Elem	Elementary	K-6,PK (w/IEP),PK,PKAR (4 YO)	445
512	Shawnee Mission Pub Sch	Johnson	8824 Oak Park-Carpenter Elementary	Elementary	K-6,PK (w/IEP),PK	512
512	Shawnee Mission Pub Sch	Johnson	8826 Overland Park Elem	Elementary	K-6,PK (w/IEP),PK	387
512	Shawnee Mission Pub Sch	Johnson	8828 Pawnee Elem	Elementary	K-6,PK (w/IEP),PK,PKAR (4 YO)	395
512	Shawnee Mission Pub Sch	Johnson	8832 Prairie Elem	Elementary	K-6,PK (w/IEP),PK	431
512	Shawnee Mission Pub Sch	Johnson	8834 Rhein Benninghoven Elem	Elementary	K-6,PK (w/IEP),PK,PKAR (4 YO)	446
512	Shawnee Mission Pub Sch	Johnson	8836 Rising Star Elem	Elementary	K-6,PK (w/IEP),PK,PKAR (4 YO)	463
512	Shawnee Mission Pub Sch	Johnson	8838 Roeland Elem	Elementary	K-6,PK (w/IEP),PK,PKAR (4 YO)	350
512	Shawnee Mission Pub Sch	Johnson	8842 Rosell Hill Elem	Elementary	K-6,PK (w/IEP),PK,PKAR (4 YO)	481
512	Shawnee Mission Pub Sch	Johnson	8844 Rushton Elem	Elementary	K-6,PK (w/IEP),PK	301
512	Shawnee Mission Pub Sch	Johnson	8846 Santa Fe Trail Elem	Elementary	K-6,PK (w/IEP),PK,PKAR (4 YO)	302
512	Shawnee Mission Pub Sch	Johnson	8857 Sunflower Elem	Elementary	K-6,PK (w/IEP),PK	383
512	Shawnee Mission Pub Sch	Johnson	8858 Tomahawk Elem	Elementary	K-6,PK (w/IEP),PK	292
512	Shawnee Mission Pub Sch	Johnson	8860 Trailwood Elem	Elementary	K-6,PK (w/IEP),PK,PKAR (4 YO)	462
512	Shawnee Mission Pub Sch	Johnson	8864 Westwood View Elem	Elementary	K-6,PK (w/IEP),PK	305
512	Shawnee Mission Pub Sch	Johnson	8868 Westridge Middle	Middle School	7-8	787
512	Shawnee Mission Pub Sch	Johnson	8870 Hocker Grove Middle	Middle School	7-8	766
512	Shawnee Mission Pub Sch	Johnson	8874 Indian Hills Middle	Middle School	7-8	880
512	Shawnee Mission Pub Sch	Johnson	8880 Indian Woods Middle	Middle School	7-8	786
512	Shawnee Mission Pub Sch	Johnson	8884 Trailridge Middle	Middle School	7-8	751
512	Shawnee Mission Pub Sch	Johnson	8886 Shawnee Mission East High	High School	9-12,NG	1676
512	Shawnee Mission Pub Sch	Johnson	8888 Shawnee Mission North High	High School	9-12,NG	1510
512	Shawnee Mission Pub Sch	Johnson	8890 Shawnee Mission Northwest High	High School	9-12,NG	1667
512	Shawnee Mission Pub Sch	Johnson	8892 Shawnee Mission South High	High School	9-12,NG	1512
512	Shawnee Mission Pub Sch	Johnson	8894 Shawnee Mission West High	High School	9-12,NG	1643

## 2021-2022 School Year Building Needs Assessment for 2022-2023 Budget Considerations

District: 369 Burrton

Bldg #

Grades Served:

School: Burrton Elementary

4734

K-5,PK (w/IEP),PKAR (4 YO)

**Please consider the following questions as you complete the needs assessment for your building.**

SECTION 1: Student Needs	Notes
a. Student Headcount	85
b. Percentage of students with an active IEP	22.00%
c. Percentage of students enrolled in English Language Learner (ELL) services	2.35%
d. Percentage of students identified as At-Risk (Free lunch)?	38.00%
e. Pupil-Teacher Ratio Average	12.1
f. Pupil-Teacher Ratio Median	13.0
g. Are the needs of Foster Care Students being met? If no, what supports are needed?	Yes
h. Are there gaps in student success among race/ethnicity student subgroups?	No
i. Is there a tiered system of support to target reading growth?	Yes
j. Is there a tiered system of support to target math growth?	Yes
k. Are there local assessments to measure reading growth?	Yes
l. Are there local assessments to measure math growth?	Yes
m. Are there learning opportunities for students to focus on academic needs outside the traditional classroom setting?	Yes
SECTION 2: State Board of Education Outcomes (please utilize your district KESA (accreditation) and Star Recognition plans/rubrics)	Notes
a. How is social/emotional growth being measured?	SAEBRS/My SAEBRS
b. What are the targets/goals related to social/emotional growth?	Self-management, Social-awareness, Realtionship skills
c. How do you determine students are ready for Kindergarten? (only if building serves Kindergarteners)	Screeners used. Will be transitioning to the Pre-K Fastbridger screener this year.
d. What are the targets/goals related to Kindergarten Readiness? (only if building serves Kindergarteners)	Social Foundations, Math, Language and literacy, physical well-being and motor development.
e. How are successes of Individual Plans of Study being measured?	Surveys
f. What are the targets/goals related to postsecondary completion/attendance? (only if building serves Grade 12)	
g. How are you ensuring students are civically engaged?	Classroom activities.



## 2021-2022 School Year Building Needs Assessment for 2022-2023 Budget Considerations

<b>District:</b> <u>369 Burrton</u>	<b>Bldg #</b>	<b>Grades Served:</b>
<b>School:</b> <u>Burrton Elementary</u>	4734	<u>K-5,PK (w/IEP),PKAR (4 YO)</u>

**Please consider the following questions as you complete the needs assessment for your building.**

SECTION 3: Curriculum Needs		Notes
a. What extended learning opportunities are provided (after school programs, summer school programs, etc.)?	ESY	
b. Are there appropriate and adequate instructional materials?	Yes	New ELA curriculum this year, new math curriculum next year.
c. Is current technology appropriate? If no, what technology is needed to support the curriculum?	Yes	Working to replace SMART boards in classrooms
SECTION 4: Educational Capacities (pursuant to K.S.A. 72-3218)		Notes
b. Subjects and areas of instruction necessary to meet the graduation requirements adopted by the state board of education are taught. (only if building serves Grade 12)		
c. Is every child in your school provided at least the following capacities?		
1. Sufficient oral and written communication skills to enable students to function in complex and rapidly changing civilization.		
2. Sufficient knowledge of economic, social, and political systems to enable students to make informed choices.		
3. Sufficient understanding of governmental processes to enable the student to understand the issues that affect his or her community, state and nation.		
4. Sufficient self-knowledge and knowledge of his or her mental and physical wellness.		
5. Sufficient grounding in the arts to enable each student to appreciate his or her cultural and historical heritage.		
6. Sufficient training or preparation for advanced training in either academic or vocational fields so as to enable each child to choose and pursue life work intelligently.		
7. Sufficient levels of academic or vocational skills to enable students to compete favorably with their counterparts in surrounding states, in academics or in job market.		
SECTION 5: Staff Needs		Notes
a. Is there adequate personnel/staff to meet the needs of the school and the needs of students under ESEA guidelines, which requires every classroom to contain an educator who is certified in the content area being taught in said classroom, and meet the goals of the school?	Yes	

## 2021-2022 School Year Building Needs Assessment for 2022-2023 Budget Considerations

<b>District:</b> <u>369 Burrton</u>	<b>Bldg #</b>	<b>Grades Served:</b>
<b>School:</b> <u>Burrton Elementary</u>	4734	<u>K-5,PK (w/IEP),PKAR (4 YO)</u>

**Please consider the following questions as you complete the needs assessment for your building.**

b. How many classified support staff are currently employed?	9	
c. How many classified support staff are needed?	9	
d. Are there enough appropriately licensed support personnel such as counselors, librarians, nurses, etc.?	No	
e. Are principals & other key staff trained to provide instructional leadership and professional development to teachers?	Yes	
f. What staff development is necessary for teachers to support student success and meet the school improvement goals?	Continued MTSS support through Kansas MTSS.	

**SECTION 6: Facility Needs** **Notes**

a. Is there adequate space for student learning?	Yes	
b. Are there necessary repairs and/or adjustment to the existing space that need to be made?	No	
c. Are additional School Buses needed or any additional Routes needed?	No	

**SECTION 7: Family Needs/Community Relations** **Notes**

a. Do you have regular events to engage parents with teachers?	Yes	
b. What types of caregiver training programs (teaching guardians how to give students help with homework, use technology that students will be required to use, etc.) are provided?	n/a	
c. Do you have an active Site Council?	Yes	
d. Do you have active PTO, PTA, Booster Club, or other organizations with parent leadership?	Yes	
e. What types of communication exists with families? Is it adequate?	Social media, teacher notes home, messengers, emails	
f. What types of communication/social media exists with your community? Is it adequate?	Facebook, Twitter, Instagram, electric sign	

**SECTION 8: School Data** **Notes**

a. Building Attendance Rate	93.4%	
b. Building Chronic Absenteeism Rate	25.7%	
c. District Chronic Absenteeism Rate	21.0%	
d. District Graduation Rate	100.0%	
e. District Dropout Rate	1.7%	

## 2021-2022 School Year Building Needs Assessment for 2022-2023 Budget Considerations

<b>District:</b> 369 Burrton	<b>Bldg #</b>	<b>Grades Served:</b>
<b>School:</b> Burrton Elementary	4734	K-5,PK (w/IEP),PKAR (4 YO)

**Please consider the following questions as you complete the needs assessment for your building.**

<b>SECTION 8A: High School Needs (buildings with grades 10 through 12 only)</b>	<b>Notes</b>
a. What is our building graduation rate	
b. What is our building dropout rate?	
c. What is our average comprehensive ACT score?	
<b>SECTION 9: Other Data</b>	<b>Notes</b>
a. Based on the building leadership team's analysis, what are the barriers your school faces with non-assessment related issues?	Attendance, ELL literacy
1. Can these be achieved with additional resources?	Yes, more one on one time with high needs students. New curriculum will also assist in designing interventions for each student.
2. Why or why not?	
b. Additional building unique items:	

## 2021-2022 School Year Building Needs Assessment for 2022-2023 Budget Considerations

District: 369 Burrton

Bldg #

Grades Served:

School: Burrton MS/HS

4736 6-12,NG

**Please consider the following questions as you complete the needs assessment for your building.**

SECTION 1: Student Needs	Notes
a. Student Headcount	121
b. Percentage of students with an active IEP	27.00%
c. Percentage of students enrolled in English Language Learner (ELL) services	4.00%
d. Percentage of students identified as At-Risk (Free lunch)?	34.00%
e. Pupil-Teacher Ratio Average	12.4
f. Pupil-Teacher Ratio Median	19.0
g. Are the needs of Foster Care Students being met? If no, what supports are needed?	Yes
h. Are there gaps in student success among race/ethnicity student subgroups?	Yes
i. Is there a tiered system of support to target reading growth?	Yes
j. Is there a tiered system of support to target math growth?	Yes
k. Are there local assessments to measure reading growth?	Yes
l. Are there local assessments to measure math growth?	Yes
m. Are there learning opportunities for students to focus on academic needs outside the traditional classroom setting?	Yes
SECTION 2: State Board of Education Outcomes (please utilize your district KESA (accreditation) and Star Recognition plans/rubrics)	Notes
a. How is social/emotional growth being measured?	SAEBRS, My SAEBRS
b. What are the targets/goals related to social/emotional growth?	Self-management, Social-awareness, Realtionship skills
c. How do you determine students are ready for Kindergarten? (only if building serves Kindergarteners)	
d. What are the targets/goals related to Kindergarten Readiness? (only if building serves Kindergarteners)	
e. How are successes of Individual Plans of Study being measured?	Surveys
f. What are the targets/goals related to postsecondary completion/attendance? (only if building serves Grade 12)	21.3
g. How are you ensuring students are civically engaged?	Classroom activities, school-wide activities
SECTION 3: Curriculum Needs	Notes

## 2021-2022 School Year Building Needs Assessment for 2022-2023 Budget Considerations

District: 369 Burrton

Bldg #

Grades Served:

School: Burrton MS/HS

4736 6-12,NG

**Please consider the following questions as you complete the needs assessment for your building.**

a. What extended learning opportunities are provided (after school programs, summer school programs, etc.)?	ESY	
b. Are there appropriate and adequate instructional materials?	Yes	
c. Is current technology appropriate? If no, what technology is needed to support the curriculum?	Yes	Working towards replacing SMART boards in classrooms, using RUS grant monies to offer more classes to students

**SECTION 4: Educational Capacities (pursuant to K.S.A. 72-3218)**

		Notes
b. Subjects and areas of instruction necessary to meet the graduation requirements adopted by the state board of education are taught. (only if building serves Grade 12)		
c. Is every child in your school provided at least the following capacities?		
1. Sufficient oral and written communication skills to enable students to function in complex and rapidly changing civilization.	Yes	
2. Sufficient knowledge of economic, social, and political systems to enable students to make informed choices.	Yes	
3. Sufficient understanding of governmental processes to enable the student to understand the issues that affect his or her community, state and nation.	Yes	
4. Sufficient self-knowledge and knowledge of his or her mental and physical wellness.	Yes	
5. Sufficient grounding in the arts to enable each student to appreciate his or her cultural and historical heritage.	Yes	
6. Sufficient training or preparation for advanced training in either academic or vocational fields so as to enable each child to choose and pursue life work intelligently.	Yes	
7. Sufficient levels of academic or vocational skills to enable students to compete favorably with their counterparts in surrounding states, in academics or in job market.	Yes	

**SECTION 5: Staff Needs**

		Notes
a. Is there adequate personnel/staff to meet the needs of the school and the needs of students under ESEA guidelines, which requires every classroom to contain an educator who is certified in the content area being taught in said classroom, and meet the goals of the school?	Yes	
b. How many classified support staff are currently employed?	9	

## 2021-2022 School Year Building Needs Assessment for 2022-2023 Budget Considerations

<b>District:</b> <u>369 Burrton</u>	<b>Bldg #</b>	<b>Grades Served:</b>
<b>School:</b> <u>Burrton MS/HS</u>	4736	6-12,NG

**Please consider the following questions as you complete the needs assessment for your building.**

c. How many classified support staff are needed?	9	
d. Are there enough appropriately licensed support personnel such as counselors, librarians, nurses, etc.?	No	
e. Are principals & other key staff trained to provide instructional leadership and professional development to teachers?	Yes	
f. What staff development is necessary for teachers to support student success and meet the school improvement goals?	Continued PD with Kansas MTSS	

**SECTION 6: Facility Needs** **Notes**

a. Is there adequate space for student learning?	Yes	
b. Are there necessary repairs and/or adjustment to the existing space that need to be made?	Yes	HVAC in HS building
c. Are additional School Buses needed or any additional Routes needed?	No	

**SECTION 7: Family Needs/Community Relations** **Notes**

a. Do you have regular events to engage parents with teachers?	Yes	
b. What types of caregiver training programs (teaching guardians how to give students help with homework, use technology that students will be required to use, etc.) are provided?	n/a	
c. Do you have an active Site Council?	Yes	
d. Do you have active PTO, PTA, Booster Club, or other organizations with parent leadership?	Yes	
e. What types of communication exists with families? Is it adequate?	Social media, phone calls, electronic sign, letters home	
f. What types of communication/social media exists with your community? Is it adequate?	Facebook, Instagram, Twitter	

**SECTION 8: School Data** **Notes**

a. Building Attendance Rate	93.6%	
b. Building Chronic Absenteeism Rate	19.6%	
c. District Chronic Absenteeism Rate	21.7%	
d. District Graduation Rate	100.0%	
e. District Dropout Rate	1.7%	

**SECTION 8A: High School Needs (buildings with grades 10 through 12 only)** **Notes**

## 2021-2022 School Year Building Needs Assessment for 2022-2023 Budget Considerations

<b>District:</b> 369 Burrton	<b>Bldg #</b>	<b>Grades Served:</b>
<b>School:</b> Burrton MS/HS	4736	6-12,NG

**Please consider the following questions as you complete the needs assessment for your building.**

a. What is our building graduation rate	100.0%	
b. What is our building dropout rate?	1.7%	
c. What is our average comprehensive ACT score?		

<b>SECTION 9: Other Data</b>	<b>Notes</b>
a. Based on the building leadership team's analysis, what are the barriers your school faces with non-assessment related issues?	Attendance, vocational opportunities, job shadowing opportunities
1. Can these be achieved with additional resources?	Yes
2. Why or why not?	
b. Additional building unique items:	

## 2020-2021 State Assessments Review for 2022-2023 Budget Considerations

**District: 369 Burrton**

Based upon your schools Needs Assessment and State Assessment results, please identify the following:

- (A) The barriers that must be overcome for each student to achieve grade level proficiency on assessments
- (B) The budget actions that should be taken to address and remove those barriers
- (C) The amount of time the board estimates it will take for each student to achieve grade level proficiency on the state assessments if the budget actions would be implemented.

Karl Matlack

Board President

27-Jun-22

Date

School	Grades Served	(A) Barriers Related to Student Needs	(B) Budget Actions	(C) Time for students to Achieve	Board Rationale/Comments
Building 1	Pre-k - 5th	Attendance, curriculum in Science and Social Studies	Continue to use ESSER and other monies for curriculum purchases and professional development for teachers. Use funds to do an	Continual learning. Should see a difference with curriculum in 2 years after adoption.	
Building 2	6th - 12th	Attendance, curriculum in Science and Social Studies	Continue to use ESSER and other monies for curriculum purchases and professional development for teachers. Use funds to do an	Continual learning. Should see a difference with curriculum in 2 years after adoption.	